



SERIE

X

CILINDRI COMPATTI INOX ISO 21287

**ISO 21287 STAINLESS STEEL
COMPACT CYLINDERS**


ARTEC[®]
PNEUMATIC COMPONENTS

CARATTERISTICHE TECNICHE

Pressione di esercizio <i>Working pressure</i>	1 ÷ 10 bar (doppio effetto - <i>double acting</i>) 2 ÷ 10 bar (semplice effetto - <i>single acting</i>)
Temperatura di esercizio <i>Working temperature</i>	0 ÷ +80°C (-20°C con aria secca - <i>with dry air</i>) 0 ÷ +150°C (con guarnizioni per alte temperature - <i>with high temperature seals</i>)
Versioni - Versions	semplice effetto - doppio effetto - antirotazione - stelo passante <i>single acting - double acting - anti-rotation - double rod</i>
Alesaggi - Bores	Ø 20 - 25 - 32 - 40 - 50 - 63 - 80 - 100 - 125 - 160 - 200
Corse - Strokes	vedere tabelle corse standard - <i>see standard stroke tables</i>
Fluido - Fluid	aria compressa, filtrata, non lubrificata - <i>compressed air, filtered, no lubrication</i>

CARATTERISTICHE COSTRUTTIVE

①	Stelo - Rod	Ø 020 ÷ 100 acciaio inox AISI 316 - <i>AISI 316 stainless steel</i> Ø 125 ÷ 200 acciaio inox AISI 304 - <i>AISI 304 stainless steel</i>
② ⑧ ⑩	Guarnizioni - Seals	poliuretano - <i>polyurethane</i>
③	Boccola - Bush	tecnopolimero - <i>technopolymer</i>
④ ⑫	Testate - Covers	Ø 020 ÷ 100 acciaio inox AISI 316 - <i>AISI 316 stainless steel</i> Ø 125 ÷ 200 acciaio inox AISI 304 - <i>AISI 304 stainless steel</i>
⑤	O-ring	nbr
⑥	Tubo - Tube	Ø 020 - 25 acciaio inox AISI 304 - <i>AISI 304 stainless steel</i> Ø 032 - 100 acciaio inox AISI 316 - <i>AISI 316 stainless steel</i> Ø 125 ÷ 200 acciaio inox AISI 304 - <i>AISI 304 stainless steel</i>
⑦ ⑪	Pistone - Piston	alluminio - <i>aluminium</i>
⑨	Magnete - Magnet	Ø 20 ÷ 50 neodimio - <i>neodymium alloy</i> Ø 63 ÷ 200 plastoferrite - <i>rubber magnet</i>
	Tiranti - Tie rods	Ø 020 ÷ 100 acciaio inox AISI 316 - <i>AISI 316 stainless steel</i> Ø 125 ÷ 200 acciaio inox AISI 304 - <i>AISI 304 stainless steel</i>
	Viti - Screws	Ø 020 ÷ 100 acciaio inox AISI 316 - <i>AISI 316 stainless steel</i> Ø 125 ÷ 200 acciaio inox AISI 304 - <i>AISI 304 stainless steel</i>
	Molla - Spring	acciaio - <i>steel</i>
	Paracolpo - Bumper	poliuretano - <i>polyurethane</i>

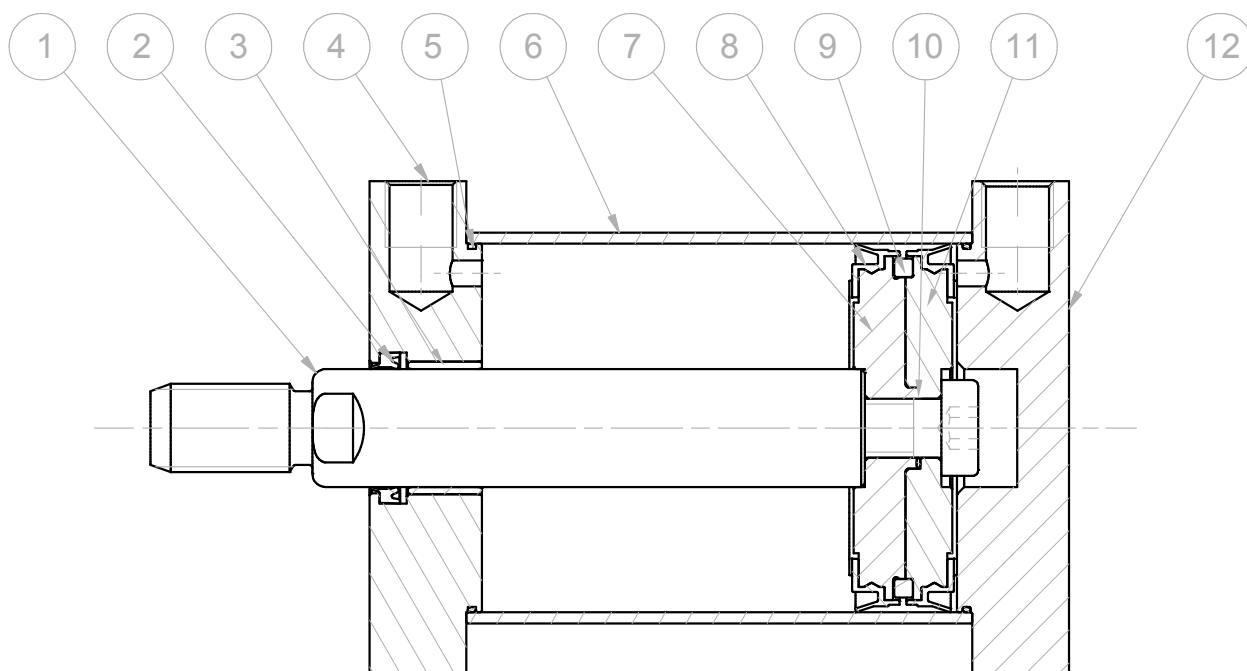


DIAGRAMMA CARICO AMMISSIBILE

APPLICABLE LOAD

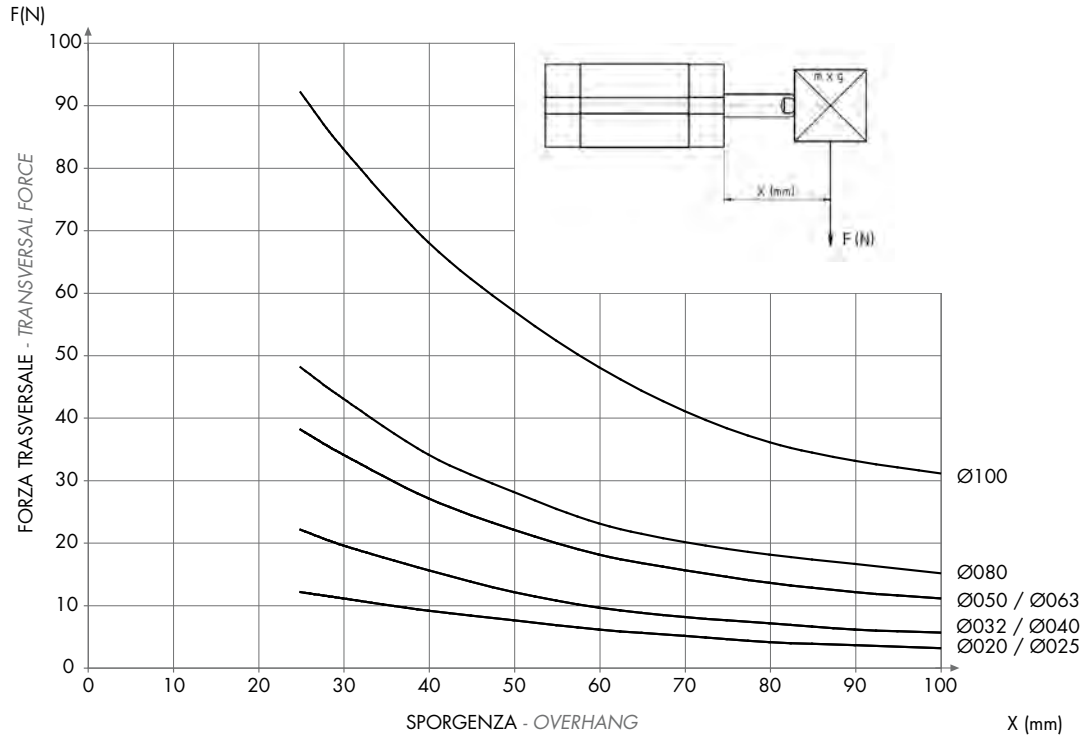


DIAGRAMMA CARICO AMMISSIBILE

APPLICABLE LOAD

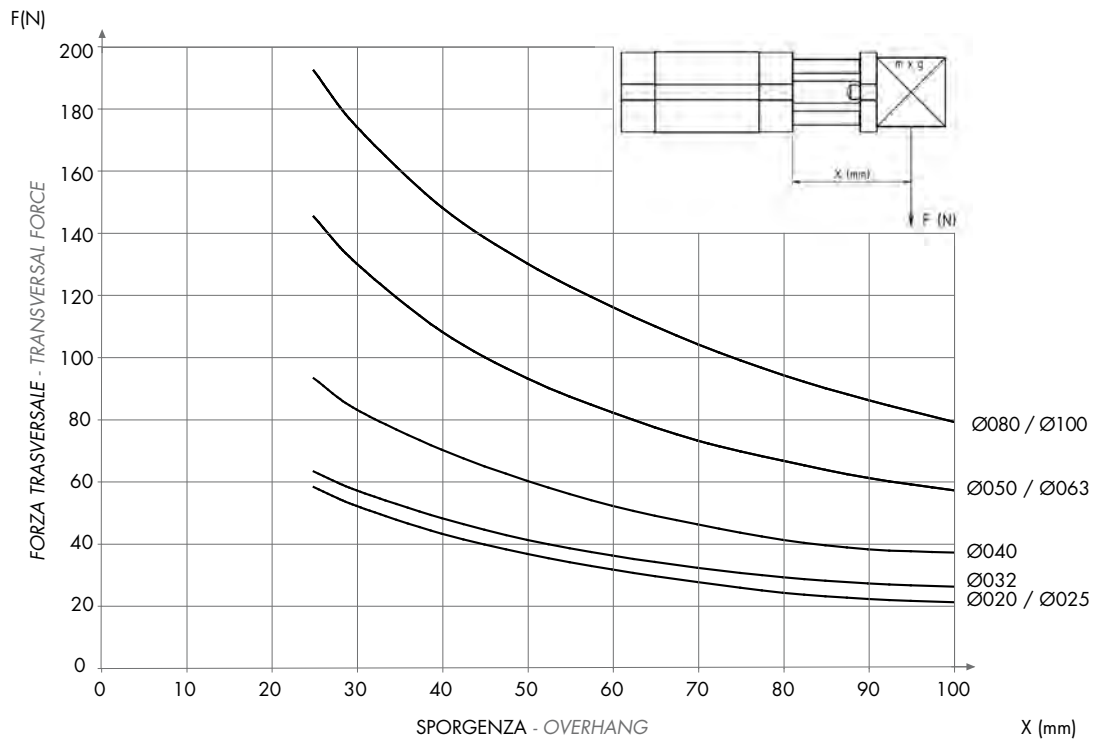


DIAGRAMMA CARICO AMMISSIBILE

XDMP

APPLICABLE LOAD

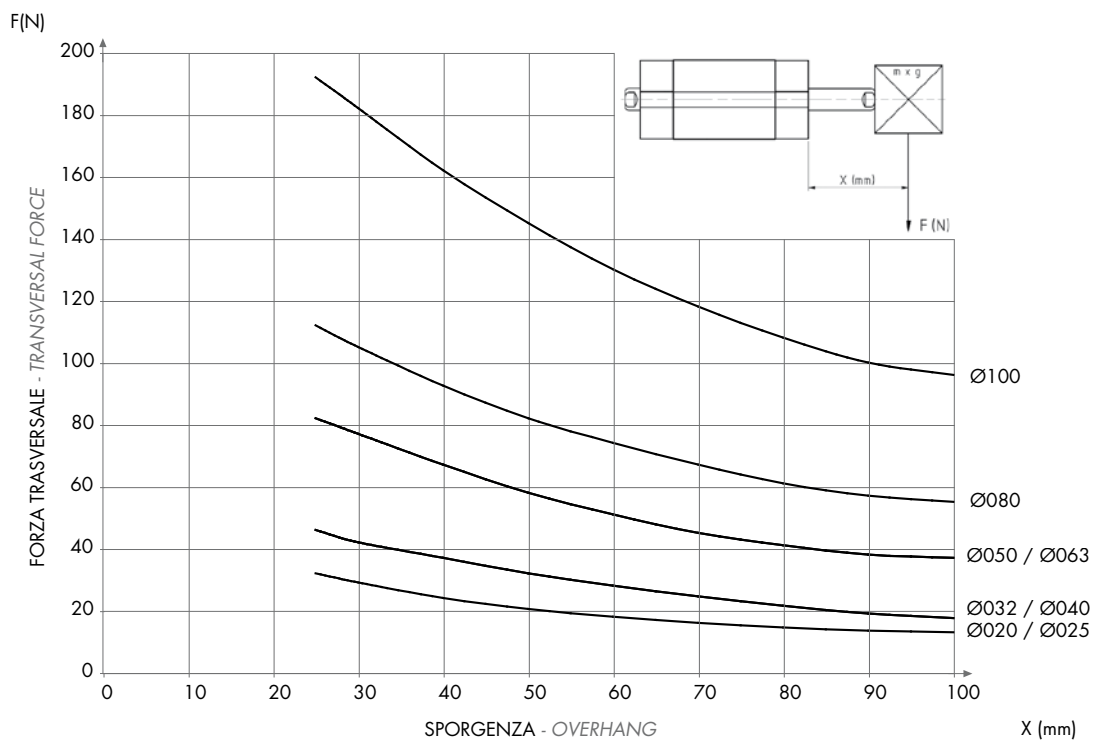
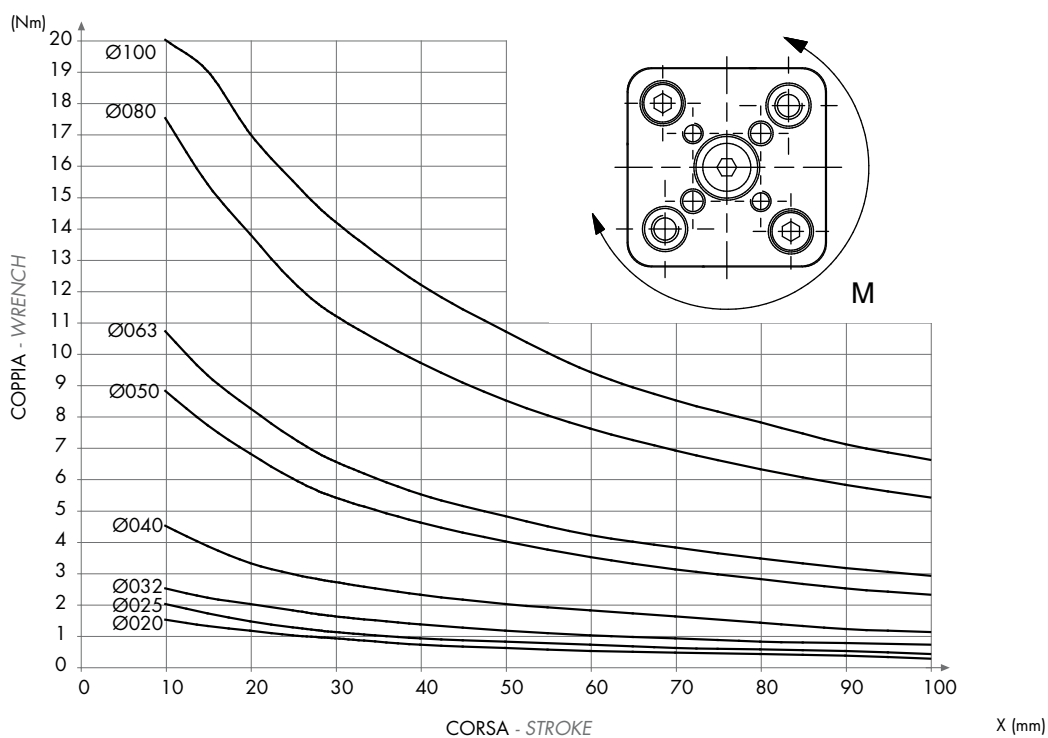


DIAGRAMMA CARICO AMMISSIBILE

XDMA

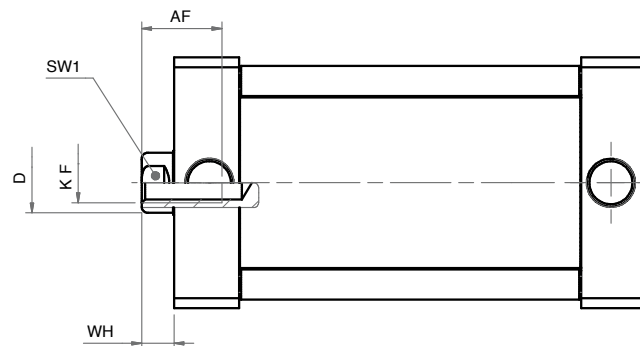
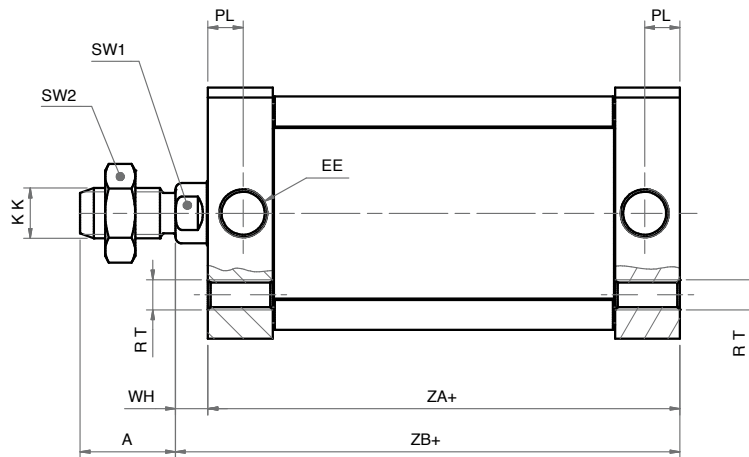
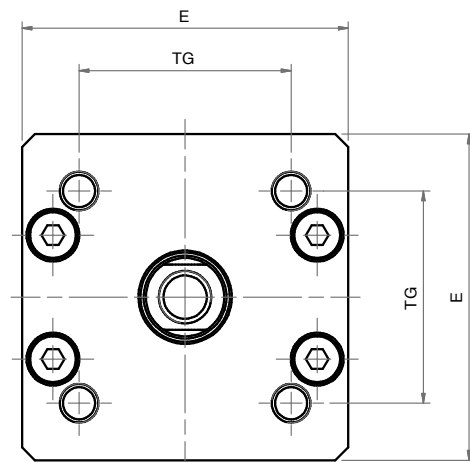
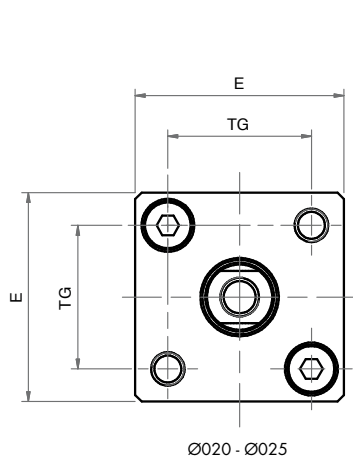
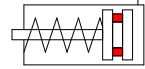
APPLICABLE LOAD



SERIE
X

SEMPLICE EFFETTO MAGNETICO - MOLLA ANTERIORE

SINGLE ACTING MAGNETIC - FRONT SPRING



SEMPLICE EFFETTO MAGNETICO - MOLLA ANTERIORE
SINGLE ACTING MAGNETIC - FRONT SPRING

DIMENSIONI - DIMENSIONS								
Ø	020	025	032	040	050	063	080	100
A	16	16	19	19	22	22	28	28
AF	10	10	12	12	16	16	20	20
øD	10	10	12	12	16	16	20	25
E	32	36	50	57	67	80	96	116
EE	M5	M5	G1/8"	G1/8"	G1/8"	G1/8"	G1/8"	G1/8"
KF	M6	M6	M8	M8	M10	M10	M12	M12
KK	M8	M8	M10x1,25	M10x1,25	M12x1,25	M12x1,25	M16x1,5	M16x1,5
PL	6	6	7	7	7	7	7,5	7,5
RT	M5	M5	M6	M6	M8	M8	M10	M10
SW1	8	8	10	10	13	13	17	22
SW2	13	13	17	17	19	19	24	24
TG	22	26	32,5	38	46,5	56,5	72	89
WH	6,5	6	6,5	7	8	8	10	10
ZA+	47*	49*	44*	45*	45*	49*	54*	67*
ZB+	53,5*	55*	50,5*	52*	53*	57*	64*	77*

+ = aggiungere lunghezza corsa (mm) - add stroke length (mm)

* per corsa - for stroke 050:

XSM 020 aggiungere / add +10 mm

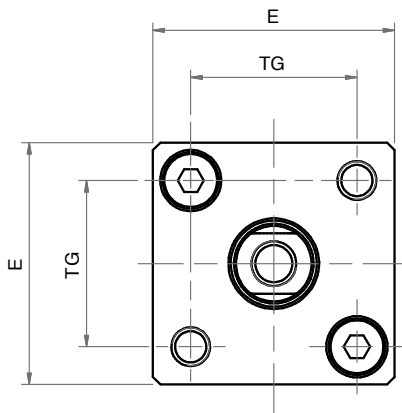
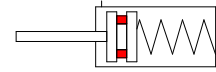
XSM 025-032-040-050-063 aggiungere / add +20 mm

XSM 080-100 aggiungere / add + 30 mm

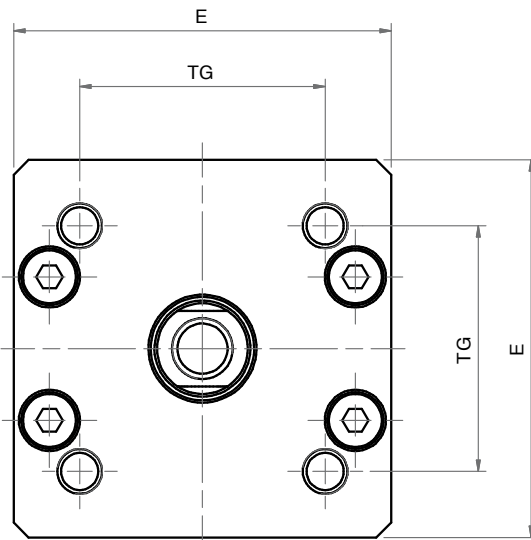
Ø	CORSE STANDARD - STANDARD STROKES
020	10 - 25 - 50
025	10 - 25 - 50
032	10 - 25 - 50
040	10 - 25 - 50
050	10 - 25 - 50
063	10 - 25 - 50
080	10 - 25 - 50
100	10 - 25 - 50

SEMPLICE EFFETTO MAGNETICO - MOLLA POSTERIORE

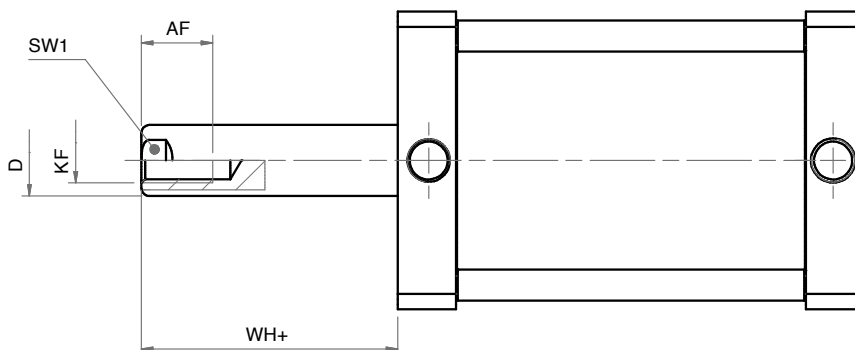
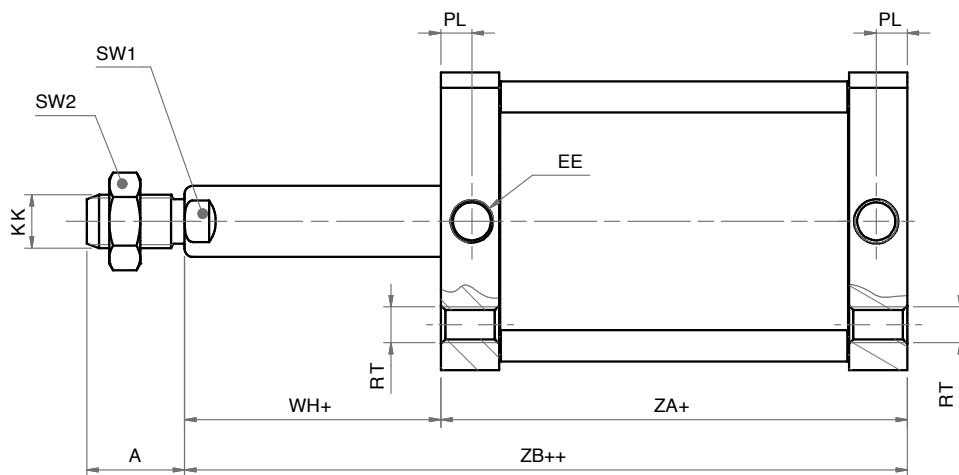
SINGLE ACTING MAGNETIC - REAR SPRING



Ø20 - Ø25



Ø32 - Ø40 - Ø50 - Ø63 - Ø80 - Ø100



SEMPLICE EFFETTO MAGNETICO - MOLLA POSTERIORE
XSEM
SINGLE ACTING MAGNETIC - REAR SPRING

DIMENSIONI - DIMENSIONS								
Ø	020	025	032	040	050	063	080	100
A	16	16	19	19	22	22	28	28
AF	10	10	12	12	16	16	20	20
ø D	10	10	12	12	16	16	20	25
E	32	36	50	57	67	80	96	116
EE	M5	M5	G1/8"	G1/8"	G1/8"	G1/8"	G1/8"	G1/8"
KF	M6	M6	M8	M8	M10	M10	M12	M12
KK	M8	M8	M10x1,25	M10x1,25	M12x1,25	M12x1,25	M16x1,5	M16x1,5
PL	6	6	7	7	7	7	7,5	7,5
RT	M5	M5	M6	M6	M8	M8	M10	M10
SW1	8	8	10	10	13	13	17	22
SW2	13	13	17	17	19	19	24	24
TG	22	26	32,5	38	46,5	56,5	72	89
WH+	6,5	6	6,5	7	8	8	10	10
ZA+	47*	49*	44*	45*	45*	49*	54*	67*
ZB++	53,5*	55*	50,5*	52*	53*	57*	64*	77*

+ = aggiungere lunghezza corsa (mm) - *add stroke length (mm)*

* per corsa / *for stroke 050:*

XSEM 020-025 aggiungere / *add +10 mm*

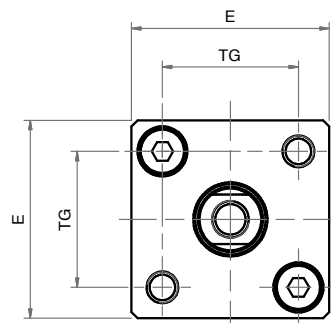
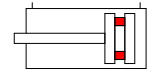
XSEM 032-040-050-063 aggiungere / *add +10 mm*

XSEM 080-100 aggiungere / *add + 20 mm*

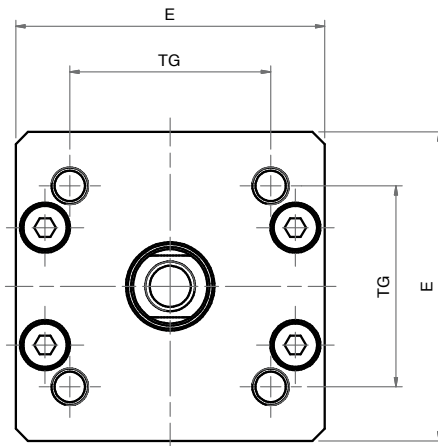
Ø	CORSE STANDARD - STANDARD STROKES
020	10 - 25 - 50
025	10 - 25 - 50
032	10 - 25 - 50
040	10 - 25 - 50
050	10 - 25 - 50
063	10 - 25 - 50
080	10 - 25 - 50
100	10 - 25 - 50

DOPPIO EFFETTO MAGNETICO

DOUBLE ACTING MAGNETIC

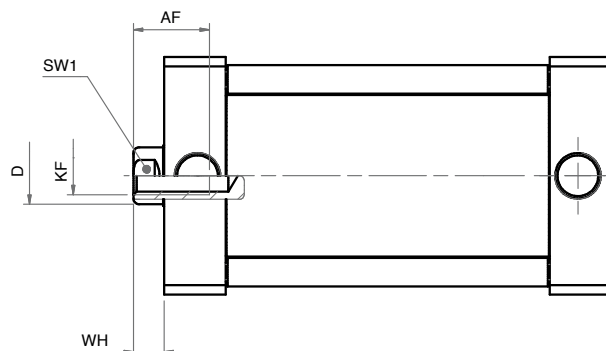
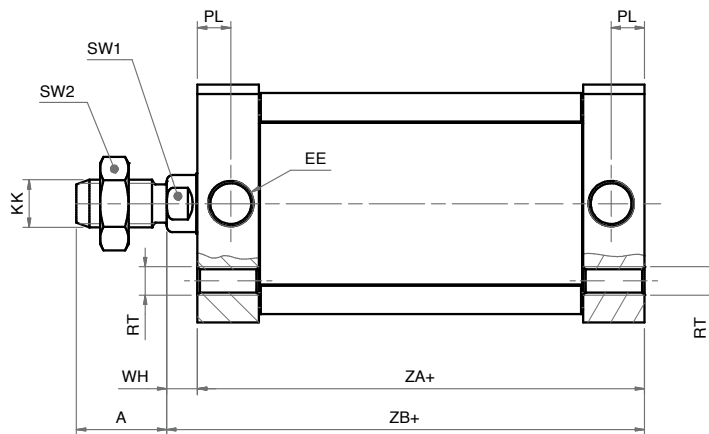


Ø020 - Ø025



Ø032 - Ø040 - Ø050 - Ø063 - Ø080

Ø100 - Ø125 - Ø160 - Ø200



DOPPIO EFFETTO MAGNETICO
DOUBLE ACTING MAGNETIC

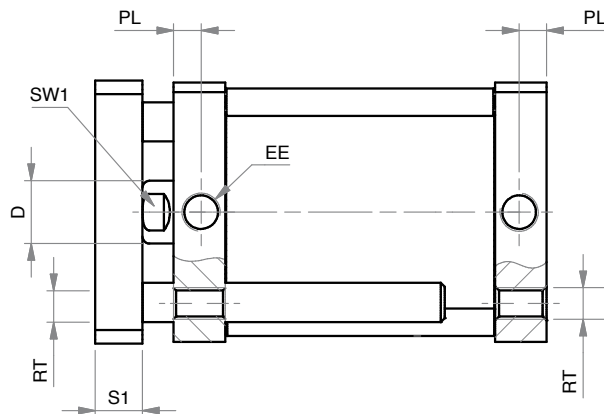
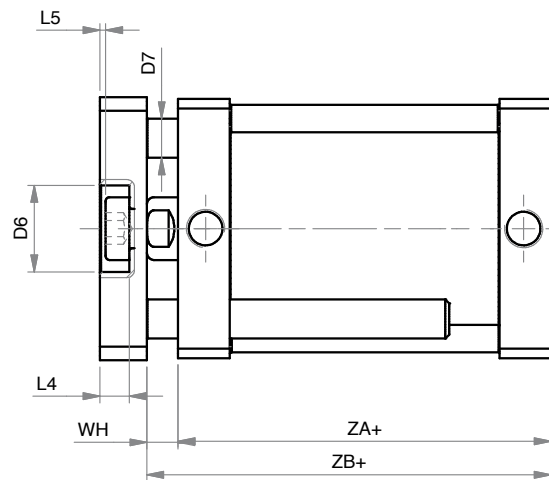
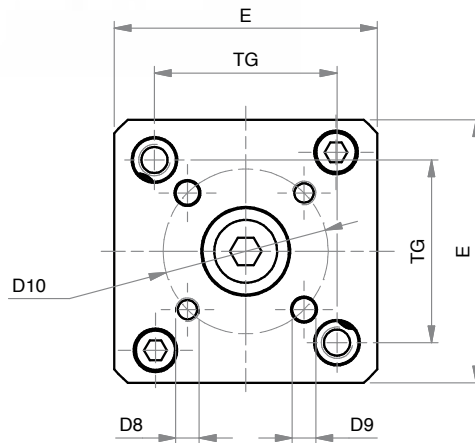
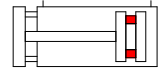
DIMENSIONI - DIMENSIONS											
Ø	020	025	032	040	050	063	080	100	125	160	200
A	16	16	19	19	22	22	28	28	54	72	72
AF	10	10	12	12	16	16	20	20	25	30	30
øD	10	10	12	12	16	16	20	25	30	40	40
E	32	36	50	57	67	80	96	116	140	180	220
EE	M5	M5	G1/8"	G1/8"	G1/8"	G1/8"	G1/8"	G1/8"	1/4"	3/8"	3/8"
KK	M8	M8	M10x1,25	M10x1,25	M12x1,25	M12x1,25	M16x1,5	M16x1,5	M27x2	M36x2	M36x2
KF	M6	M6	M8	M8	M10	M10	M12	M12	M14	M20	M20
PL	6	6	7	7	7	7	7,5	7,5	10	12	12
RT	M5	M5	M6	M6	M8	M8	M10	M10	M12	M16	M16
SW1	8	8	10	10	13	13	17	22	28	36	36
SW2	13	13	17	17	19	19	24	24	41	55	55
TG	22	26	32,5	38	46,5	56,5	72	89	110	140	175
WH	6,5	6	6,5	7	8	8	10	10	10	12	12
ZA+	37	39	44	45	45	49	54	67	78	87	87
ZB+	43,5	45	50,5	52	53	57	64	77	88	99	99

+ = aggiungere lunghezza corsa (mm) - add stroke length (mm)

Ø CORSE STANDARD - STANDARD STROKES	
020	10 - 25 - 50 - 75 - 100 - 125 - 160 - 200 - 250 - 300
025	10 - 25 - 50 - 75 - 100 - 125 - 160 - 200 - 250 - 300
032	10 - 25 - 50 - 75 - 100 - 125 - 160 - 200 - 250 - 300 - 350 - 400
040	10 - 25 - 50 - 75 - 100 - 125 - 160 - 200 - 250 - 300 - 350 - 400
050	10 - 25 - 50 - 75 - 100 - 125 - 160 - 200 - 250 - 300 - 350 - 400
063	10 - 25 - 50 - 75 - 100 - 125 - 160 - 200 - 250 - 300 - 350 - 400
080	10 - 25 - 50 - 75 - 100 - 125 - 160 - 200 - 250 - 300 - 350 - 400
100	10 - 25 - 50 - 75 - 100 - 125 - 160 - 200 - 250 - 300 - 350 - 400
125	10 - 25 - 50 - 75 - 100 - 125 - 160 - 200 - 250 - 300
160	10 - 25 - 50 - 75 - 100 - 125 - 160 - 200 - 250 - 300
200	10 - 25 - 50 - 75 - 100 - 125 - 160 - 200 - 250 - 300

DOPPIO EFFETTO MAGNETICO ANTIROTAZIONE

DOUBLE ACTING MAGNETIC ANTI-ROTATION



Ø020 - Ø025 - Ø032 - Ø040 - Ø050 - Ø063 - Ø080 - Ø100

DOPPIO EFFETTO MAGNETICO ANTIROTAZIONE
DOUBLE ACTING MAGNETIC ANTI-ROTATION

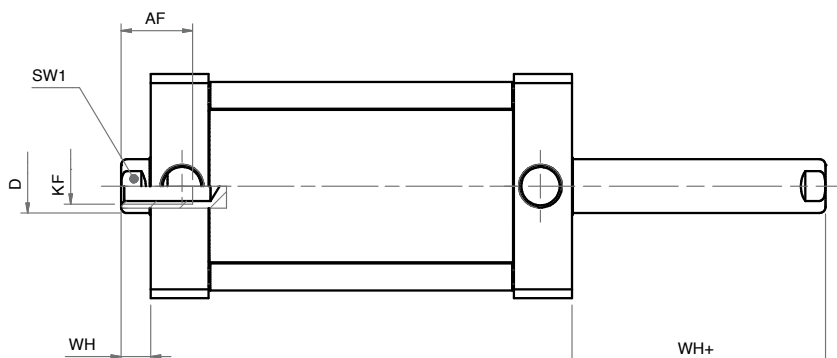
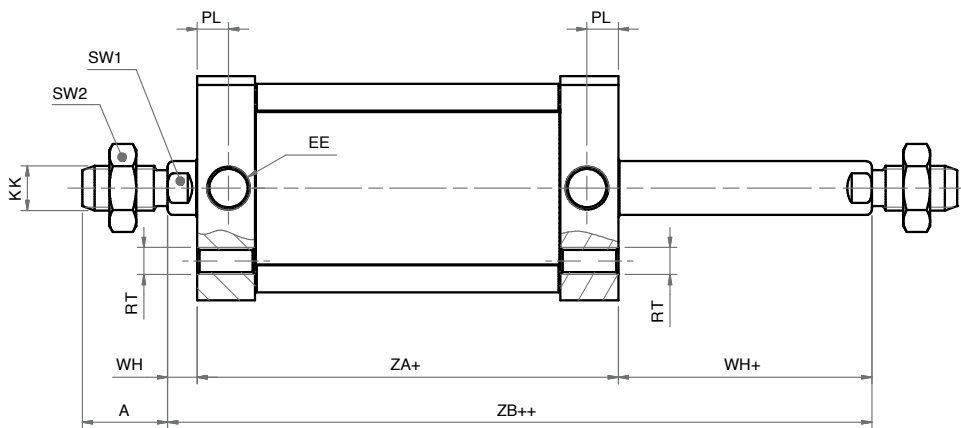
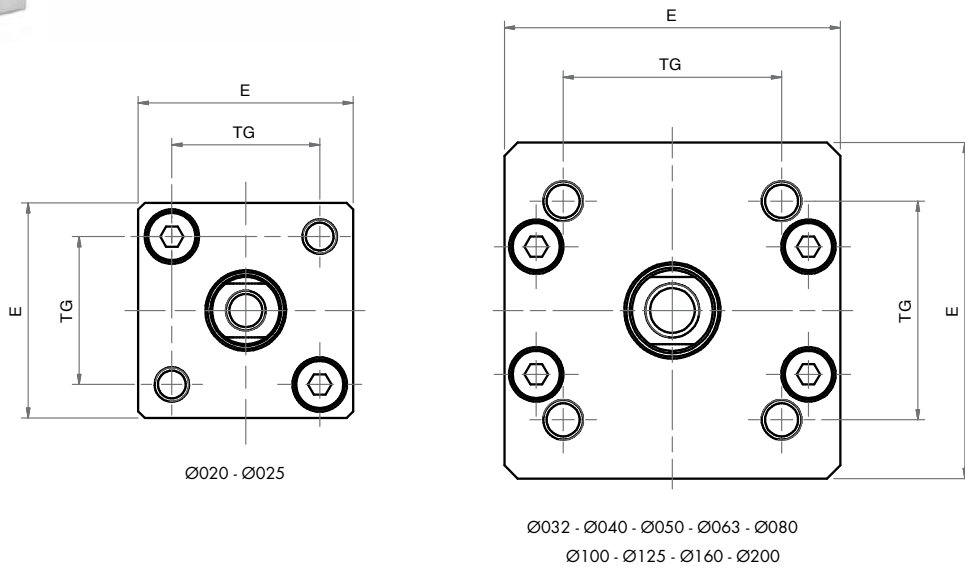
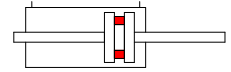
DIMENSIONI - DIMENSIONS								
Ø	020	025	032	040	050	063	080	100
Ø D	10	10	12	12	16	16	20	25
Ø D6	11	14	17	17	22	22	28	30
Ø D7	6	6	6	8	10	10	12	14
D8	M4	M5	M5	M5	M6	M6	M8	M10
Ø D9	4	5	5	5	6	6	8	10
Ø D10	17	22	28	33	42	50	65	80
E	32	36	50	57	67	80	96	116
EE	M5	M5	G1/8	G1/8	G1/8	G1/8	G1/8	G1/8
SW1	8	8	10	10	13	13	17	22
L4	5	5	6,5	6,5	7,5	7,5	9	10
L5	1	1	1,5	1,5	1,5	1,5	2	3
PL	6	6	7	7	7	7	7,5	7,5
RT	M5	M5	M6	M6	M8	M8	M10	M10
S1	8	8	10	10	12	12	14	14
TG	22	26	32,5	38	46,5	56,5	72	89
WH	6,5	6	6,5	7	8	8	10	10
ZA+	37	39	44	45	45	49	54	67
ZB+	43,5	45	50,5	52	53	57	64	77

+ = aggiungere lunghezza corsa (mm) - add stroke length (mm)

Ø	CORSE STANDARD - STANDARD STROKES
020	10 - 25 - 50 - 75 - 100 - 125 - 160 - 200 - 250 - 300
025	10 - 25 - 50 - 75 - 100 - 125 - 160 - 200 - 250 - 300
032	10 - 25 - 50 - 75 - 100 - 125 - 160 - 200 - 250 - 300 - 350 - 400
040	10 - 25 - 50 - 75 - 100 - 125 - 160 - 200 - 250 - 300 - 350 - 400
050	10 - 25 - 50 - 75 - 100 - 125 - 160 - 200 - 250 - 300 - 350 - 400
063	10 - 25 - 50 - 75 - 100 - 125 - 160 - 200 - 250 - 300 - 350 - 400
080	10 - 25 - 50 - 75 - 100 - 125 - 160 - 200 - 250 - 300 - 350 - 400
100	10 - 25 - 50 - 75 - 100 - 125 - 160 - 200 - 250 - 300 - 350 - 400

DOPPIO EFFETTO MAGNETICO STELO PASSANTE

DOUBLE ACTING MAGNETIC WITH DOUBLE ROD



DOPPIO EFFETTO MAGNETICO STELO PASSANTE
DOUBLE ACTING MAGNETIC WITH DOUBLE ROD

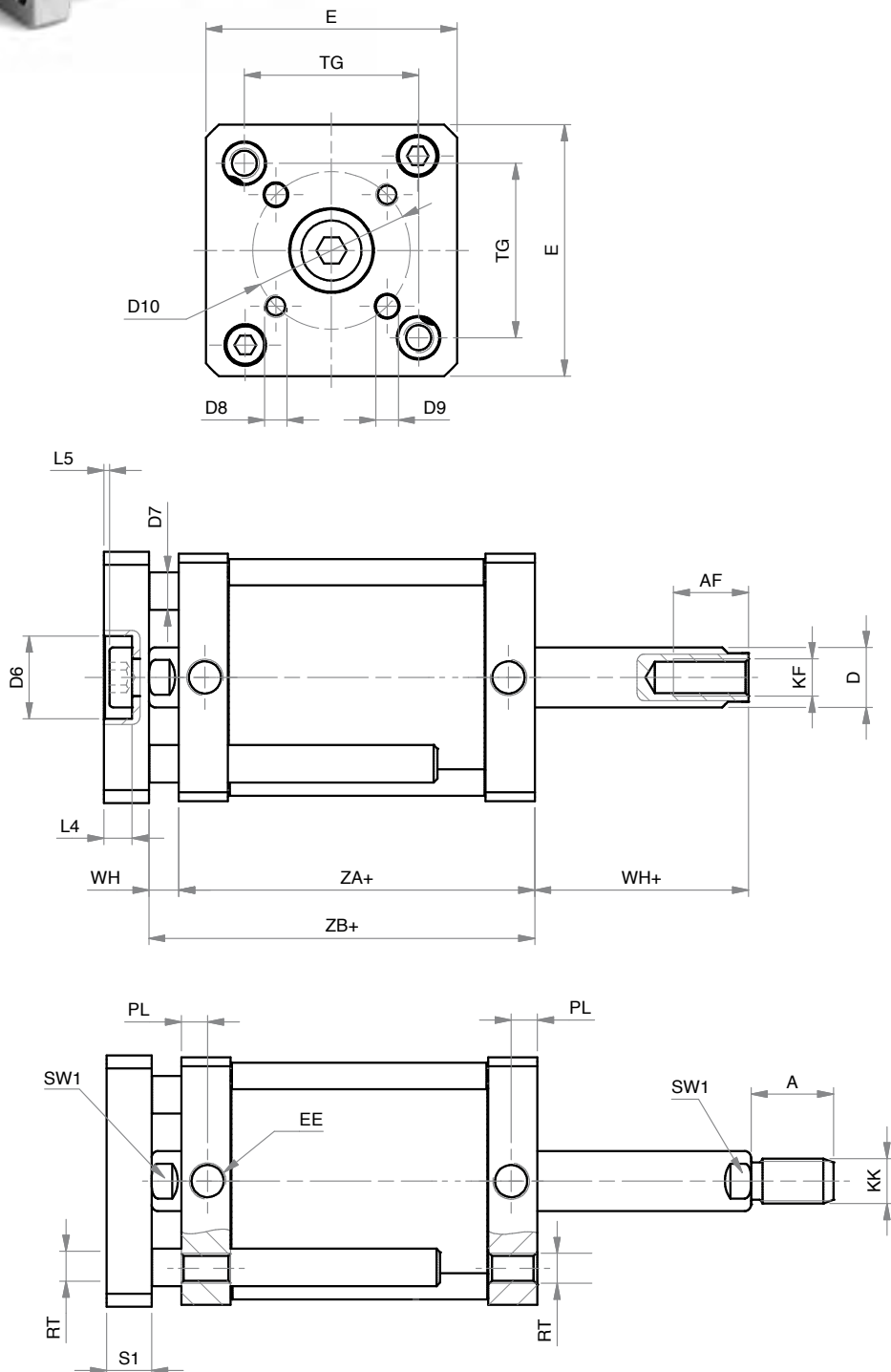
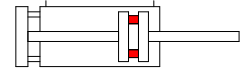
DIMENSIONI - DIMENSIONS											
Ø	020	025	032	040	050	063	080	100	125	160	200
A	16	16	19	19	22	22	28	28	54	72	72
AF	10	10	12	12	16	16	20	20	25	30	30
øD	10	10	12	12	16	16	20	25	30	40	40
E	32	36	50	57	67	80	96	116	140	180	220
EE	M5	M5	G1/8"	G1/8"	G1/8"	G1/8"	G1/8"	G1/8"	1/4"	3/8"	3/8"
KF	M6	M6	M8	M8	M10	M10	M12	M12	M14	M20	M20
KK	M8	M8	M10x1,25	M10x1,25	M12x1,25	M12x1,25	M16x1,5	M16x1,5	M27x2	M36x2	M36x2
PL	6	6	7	7	7	7	7,5	7,5	10	12	12
RT	M5	M5	M6	M6	M8	M8	M10	M10	M12	M16	M16
SW1	8	8	10	10	13	13	17	22	28	36	36
SW2	13	13	17	17	19	19	24	24	41	55	55
TG	22	26	32,5	38	46,5	56,5	72	89	110	140	175
WH	6,5	6	6,5	7	8	8	10	10	10	12	12
WH+	6,5	6	6,5	7	8	8	10	10	10	12	12
ZA+	37	39	44	45	45	49	54	67	78	87	87
ZB++	43,5	45	50,5	52	53	57	64	77	88	99	99

+ = aggiungere lunghezza corsa (mm) - add stroke length (mm)

Ø	CORSE STANDARD - STANDARD STROKES
020	5 - 10 - 15 - 20 - 25 - 30 - 40 - 50 - 60 - 70 - 75 - 80 - 90 - 100 - 125 - 160 - 200 - 250
025	5 - 10 - 15 - 20 - 25 - 30 - 40 - 50 - 60 - 70 - 75 - 80 - 90 - 100 - 125 - 160 - 200 - 250
032	5 - 10 - 15 - 20 - 25 - 30 - 40 - 50 - 60 - 70 - 75 - 80 - 90 - 100 - 125 - 160 - 200 - 250 - 300 - 350 - 400
040	5 - 10 - 15 - 20 - 25 - 30 - 40 - 50 - 60 - 70 - 75 - 80 - 90 - 100 - 125 - 160 - 200 - 250 - 300 - 350 - 400
050	5 - 10 - 15 - 20 - 25 - 30 - 40 - 50 - 60 - 70 - 75 - 80 - 90 - 100 - 125 - 160 - 200 - 250 - 300 - 350 - 400
063	5 - 10 - 15 - 20 - 25 - 30 - 40 - 50 - 60 - 70 - 75 - 80 - 90 - 100 - 125 - 160 - 200 - 250 - 300 - 350 - 400
080	5 - 10 - 15 - 20 - 25 - 30 - 40 - 50 - 60 - 70 - 75 - 80 - 90 - 100 - 125 - 160 - 200 - 250 - 300 - 350 - 400
100	5 - 10 - 15 - 20 - 25 - 30 - 40 - 50 - 60 - 70 - 75 - 80 - 90 - 100 - 125 - 160 - 200 - 250 - 300 - 350 - 400
125	10 - 25 - 50 - 75 - 100 - 125 - 160 - 200 - 250 - 300
160	10 - 25 - 50 - 75 - 100 - 125 - 160 - 200 - 250 - 300
200	10 - 25 - 50 - 75 - 100 - 125 - 160 - 200 - 250 - 300

DOPPIO EFFETTO MAGNETICO STELO PASSANTE ANTIROTAZIONE

DOUBLE ACTING MAGNETIC ANTI-ROTATION WITH DOUBLE ROD



Ø020 - Ø025 - Ø032 - Ø040 - Ø050 - Ø063 - Ø080 - Ø100

DOPPIO EFFETTO MAGNETICO STELO PASSANTE ANTIROTAZIONE
XDMPA
DOUBLE ACTING MAGNETIC ANTI-ROTATION WITH DOUBLE ROD

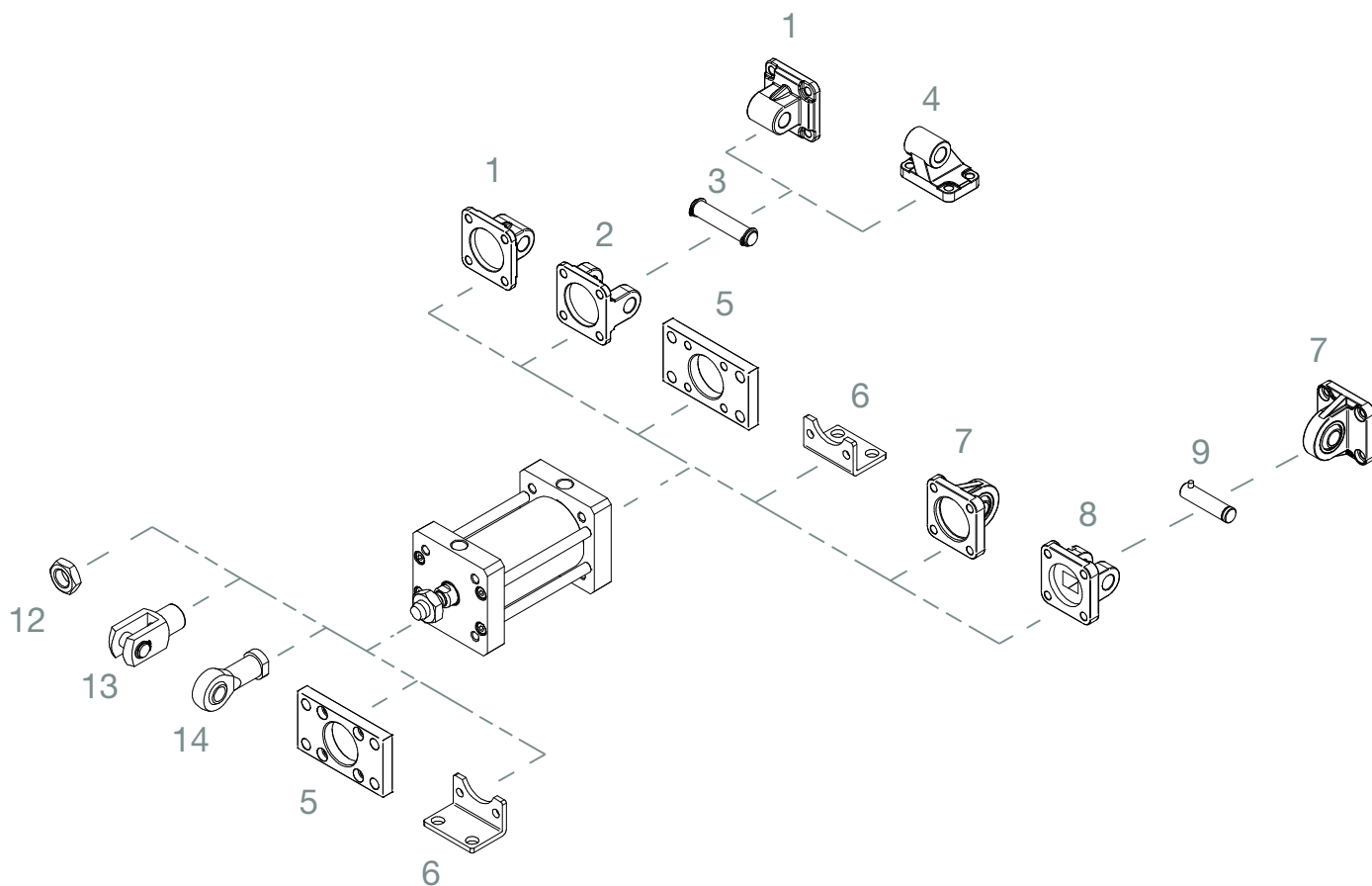
DIMENSIONI - DIMENSIONS								
Ø	020	025	032	040	050	063	080	100
A	16	16	19	19	22	22	28	28
AF	10	10	12	12	16	16	20	20
ø D	10	10	12	12	16	16	20	25
ø D6	11	14	17	17	22	22	28	30
ø D7	5	6	6	8	10	10	12	14
D8	M4	M5	M5	M5	M6	M6	M8	M10
ø D9	4	5	5	5	6	6	8	10
ø D10	17	22	28	33	42	50	65	80
E	32	36	50	57	67	80	96	116
EE	M5	M5	G1/8	G1/8	G1/8	G1/8	G1/8	G1/8
SW1	8	8	10	10	13	13	17	22
KF	M6	M6	M8	M8	M10	M10	M12	M12
KK	M8	M8	M10x1,25	M10x1,25	M12x1,25	M12x1,25	M16x1,5	M16x1,5
L4	5	5	6,5	6,5	7,5	7,5	9	10
L5	1	1	1,5	1,5	1,5	1,5	2	3
PL	6	6	7	7	7	7	7,5	7,5
RT	M5	M5	M6	M6	M8	M8	M10	M10
S1	8	8	10	10	12	12	14	14
TG	22	26	32,5	38	46,5	56,5	72	89
WH	6,5	6	6,5	7	8	8	10	10
WH+	6,5	6	6,5	7	8	8	10	10
ZA+	37	39	44	45	45	49	54	67
ZB+	43,5	45	50,5	52	53	57	64	77

+ = aggiungere lunghezza corsa (mm) - add stroke length (mm)

Ø	CORSE STANDARD - STANDARD STROKES
020	10 - 25 - 50 - 75 - 100 - 125 - 160 - 200 - 250 - 300
025	10 - 25 - 50 - 75 - 100 - 125 - 160 - 200 - 250 - 300
032	10 - 25 - 50 - 75 - 100 - 125 - 160 - 200 - 250 - 300 - 350 - 400
040	10 - 25 - 50 - 75 - 100 - 125 - 160 - 200 - 250 - 300 - 350 - 400
050	10 - 25 - 50 - 75 - 100 - 125 - 160 - 200 - 250 - 300 - 350 - 400
063	10 - 25 - 50 - 75 - 100 - 125 - 160 - 200 - 250 - 300 - 350 - 400
080	10 - 25 - 50 - 75 - 100 - 125 - 160 - 200 - 250 - 300 - 350 - 400
100	10 - 25 - 50 - 75 - 100 - 125 - 160 - 200 - 250 - 300 - 350 - 400

ACCESSORI DI FISSAGGIO ISO 15552 INOX (UTILIZZABILI ANCHE PER CILINDRI ISO 21287)

STAINLESS STEEL ISO 15552 MOUNTING PARTS (ALSO SUITABLE FOR ISO 21287 CYLINDERS)



POS.	CODE	DESCRIZIONE -
1	CMI---X	cerniera maschio iso - iso male hinge
2	CFI---X	cerniera femmina iso - iso female hinge
3	PCF---X	perno per cerniera - pin for hinge
4	ASI---X	articolazione a squadra iso - iso square hinge
5	FI---X	flangia iso - iso flange
6	PBI---X	pedino basso iso - iso foot mounting
7	CMSI---X	cerniera maschio snodata iso - iso male hinge with ball joint
8	CFSI---X	cerniera femmina stretta iso - iso narrow female hinge
9	PCFS---X	perno per cerniera stretta - pin for narrow hinge
12	DA--x---X	dado - nut
13	FP--x---X	forcella con perno - clevis with pin
14	SSFI--x---X	snodo sferico - rod eye

Fissaggi forniti con viti - Mounting parts supplied with screws

Dimensioni accessori: vedi sezione SERIE W
Accessories dimensions: see SERIE W chapter