

# FLOW AIDS



THE WORLDWIDE LEADER IN VIBRATION TECHNOLOGY



# EXTERNAL APPLICATION

## ELECTRIC VIBRATORS

### PRODUCT SERIES

### APPLICATIONS

### POWDERS

### FEATURES

### BENEFITS

2 POLES MICRO  
MVE-MICRO



Small hoppers  
Micro-screens  
Chutes  
Vibrating feeders,  
tables and  
channels

**Fine, dry powder.**  
Plastics  
Sugar  
Bicarbonate  
Seeds

Compact, uni-body,  
heavy-duty design.  
Supplied with  
stainless  
steel covers in  
standard version.  
Atex II2D T100 °C.

Economical  
Easy to install  
Single phase cable  
with built-in capacitor  
Adjustable force

2 POLES  
MVE



Silos  
Hoppers  
Dispensers  
Agitators  
Mixers  
Filter cleaning  
Vibrating feeders  
and tables

**Fine and dry  
powders,  
granules.**  
Cement  
Flour  
Grit  
Sugar

Suitable for indoor  
and outdoor use.  
Silos and hoppers  
of any material  
and capacity from  
200 to 10,000 kg.  
Atex II2D T100 °C.

Economical  
Wide range  
Special windings  
for different  
geographical areas  
Adjustable force

DIRECT CURRENT  
MVE-DC



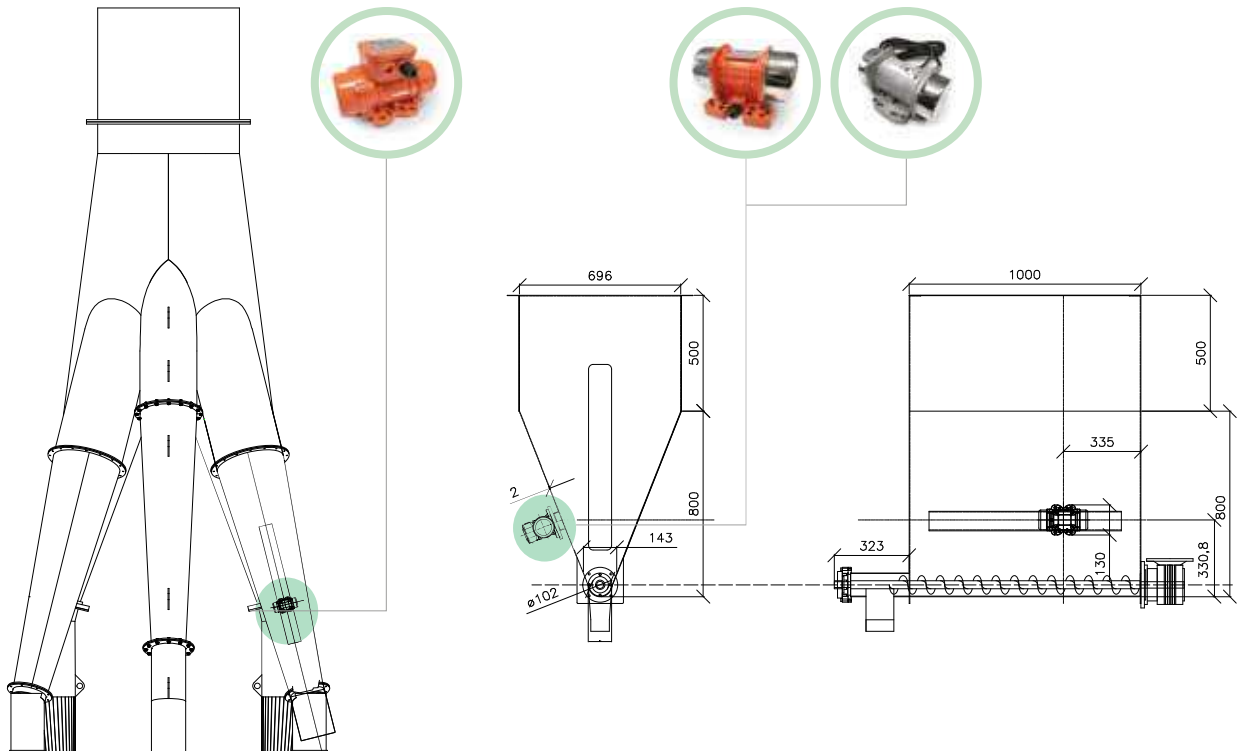
Automotive  
Hoppers  
Salt and manure  
spreaders  
Dump trucks  
Concrete pump  
grids

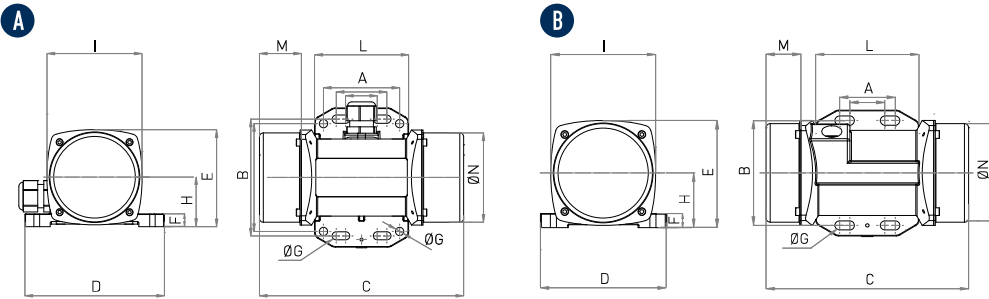
**Granular powders.**  
Concrete  
Fertilizers  
Corn  
Soy  
Rice  
Seeds  
Salt  
Sand

Stainless steel  
covers.  
DC Motor 3,000  
RPM 12V-24V.  
Power from 80  
to 520 W.  
Resistant to oxidation.

Economical  
Robust  
Safe  
Terminal box connection  
sealed (option)  
Adjustable force

## APPLICATIONS





### DIMENSIONAL SPECIFICATIONS

MODEL		DRAW.	C		M		A		B		Ø G		HOLES n°	D		E		F		H		I		L		N		SCREW	
50 Hz	60 Hz - USA		mm	in	mm	in	mm	in	mm	in	mm	in		mm	in	mm	in	mm	in	mm	in	mm	in	mm	in	mm	in	mm	in
MVE 21/3E-MICRO	MVE 21/36E-MICRO	A	145	5.7	25	1.0	25-40 60	1-1.6 2.4	92	3.6	6.5	0.3	4	110	4.3	76.5	3.0	10	0.4	39	1.5	75	3.0	74	2.9	70.5	2.8	M5	3/16"
MVE 41/3E-MICRO	MVE41/36E-MICRO	B	145	5.7	25	1.0	25-40 60	1-1.6 2.4	75	3.0	6.5	0.3	4	90	3.5	76.5	3.0	10	0.4	39	1.5	75	3.0	74	2.9	70.5	2.8	M5	3/16"
MVE 3/3E-MICRO-M	MVE 3/36E-MICRO-M	A	145	5.7	25	1.0	25-40 60	1-1.6 2.4	92	3.6	6.5	0.3	4	110	4.3	76.5	3.0	10	0.4	39	1.5	75	3.0	74	2.9	70.5	2.8	M5	3/16"
MVE 6/3E-MICRO-M	MVE 6/36E-MICRO-M	B	145	5.7	25	1.0	25-40 60	1-1.6 2.4	75	3.0	6.5	0.3	4	90	3.5	76.5	3.0	10	0.4	39	1.5	75	3.0	74	2.9	70.5	2.8	M5	3/16"
MVE 21/3E-MICRO-M	MVE 21/36E-MICRO-M	A	145	5.7	25	1.0	25-40 60	1-1.6 2.4	92	3.6	6.5	0.3	4	110	4.3	76.5	3.0	10	0.4	39	1.5	75	3.0	74	2.9	70.5	2.8	M5	3/16"
MVE 41/3E-MICRO-M	MVE 41/36E-MICRO-M	A	161	6.3	33	1.3	25-40 60	1-1.6 2.4	92	3.6	6.5	0.3	4	110	4.3	76.5	3.0	10	0.4	39	1.5	75	3.0	74	2.9	70.5	2.8	M5	3/16"

## MVE-MICRO THREE PHASE - 3000 RPM 400V 50HZ / 3600 RPM 460V 60HZ

MODEL		WORKING MOMENT		CENTRIFUGAL FORCE				WEIGHT		ELECTRICAL FEATURES											
										POWER		CURRENT			COSΦ						
										kW	Hp	A max									
50 Hz	60 Hz- USA	50Hz	60Hz	50Hz	60Hz	50Hz	60Hz	50Hz	60Hz	50Hz	60Hz	50Hz	400V	460V	230V	400V	460V	230V	400V	460V	
MVE 21/3E-MICRO	MVE 21/36E-MICRO	0.40	0.40	0.35	0.35	20	29	44	64	2.0	4.4	0.04	0.04	0.05	0.05	0.21	0.12	0.12	0.45	0.45	0.42
MVE 41/3E-MICRO	MVE41/36E-MICRO	0.90	0.90	0.78	0.78	45	65	99	143	2.4	5.3	0.06	0.06	0.08	0.08	0.30	0.18	0.18	0.44	0.44	0.40

## MVE-MICRO SINGLE PHASE - 3000 RPM 230V 50HZ / 3600 RPM 115V 60HZ

MODEL		WORKING MOMENT		CENTRIFUGAL FORCE				WEIGHT		ELECTRICAL FEATURES										
										POWER		CURRENT			COSΦ					
										Kw	Hp	A max								
50 Hz	60 Hz- USA	50Hz	60Hz	50Hz	60Hz	50Hz	60Hz	50Hz	60Hz	50Hz	60Hz	50Hz	115V	230V	115V	230V	115V	230V	115V	
MVE 3/3E-MICRO-M	MVE 3/36E-MICRO-M	0.08	0.08	0.07	0.07	4	6	9	13	1.6	3.5	0.03	0.04	0.04	0.05	0.30	0.80	0.80	0.43	0.43
MVE 6/3E-MICRO-M	MVE 6/36E-MICRO-M	0.12	0.12	0.10	0.10	6	9	13	20	1.6	3.5	0.03	0.04	0.04	0.05	0.30	0.80	0.80	0.43	0.43
MVE 21/3E-MICRO-M	MVE 21/36E-MICRO-M	0.40	0.40	0.35	0.35	20	29	44	64	2.0	4.4	0.04	0.07	0.05	0.09	0.20	0.80	0.80	0.80	0.80
MVE 41/3E-MICRO-M	MVE 41/36E-MICRO-M	0.90	0.90	0.78	0.78	45	65	99	143	2.4	5.3	0.05	0.07	0.07	0.09	0.25	0.80	0.80	0.80	0.80

## MVE-MICRO - 2 POLES ELECTRIC VIBRATORS - THREE PHASE / SINGLE PHASE

APPLICATION	Small hopper - micro screen - chute - vibrating feeder table and channels
POWDER	Fine - dry
PROBLEM SOLVING	Bridge and rat-holing

### FEATURES

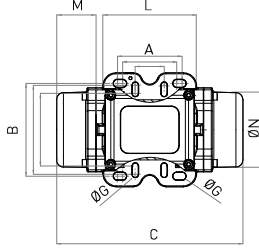
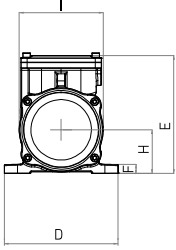
DUTY CYCLE	Continuous - S1
ENVIRONMENT TEMPERATURE	From -20 °C to 40 °C (from -4 °F to 104 °F)
MAX NOISE LEVEL	76 dB(A)
ATEX	II3D Ex tc IIIC Tx IP 66
MATERIAL	Body aluminium - stainless steel cover
CAPACITOR	MICRO 21 - 115v µF 4, 220v 50/60Hz µF1,5   MICRO 41 - 115v µF 4, 220v 50/60Hz µF3

### OPTIONS

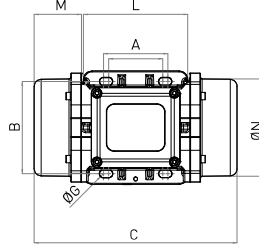
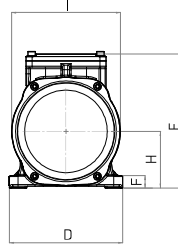
ATEX	Ex II 2D Ex tb IIIC Tx Db IP 66 Ex tb IIIC Tx Db IP66
CUSTOMISED CABLE	Available

This information is furnished without warranty, representation, inducement or license of any kind. It is accurate to the best OLI knowledge or is obtained from sources believed to be accurate. OLI therefore assumes no legal responsibility. The latest and most updated information are available online.

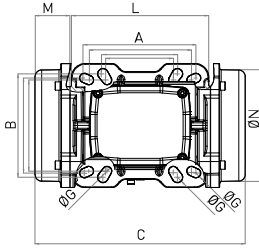
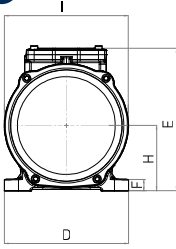
A1



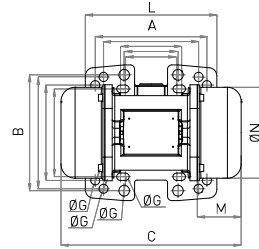
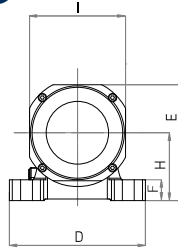
B1



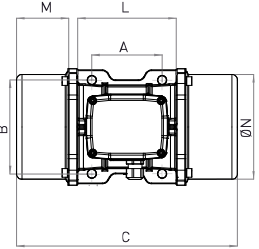
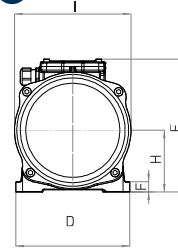
C1



G



D1



### DIMENSIONAL SPECIFICATIONS

THREE PHASE MODEL			DRAWING	SIZE	C		M		A		B		Ø G		HOLES	D		E		F		H		I		L		N		WEIGHT	
50 Hz	60 Hz	60 Hz U.S. Market			mm	in	mm	in	mm	in	mm	in	mm	in		mm	in	mm	in	mm	in	mm	in	mm	in	mm	in	mm	in	mm	in
MVE 60/3E-10A0	MVE 60/36E-10A0	MVE 160/2E-10A0	A1	10A0	213	8.4	45	1.8	62-74 33	2.44-2.91 1.3	106	4.2	9	0.4	4	130	5.1	135	5.3	11	0.4	50	2.0	96	3.8	107	4.2	85	3.3	4	9.3
MVE 100/3E-10A0	MVE 100/36E-10A0	MVE 220/2E-10A0	A1	10A0	213	8.4	45	1.8	62-74 33	2.44-2.91 1.3	106	4.2	9	0.4	4	130	5.1	135	5.3	11	0.4	50	2.0	96	3.8	107	4.2	85	3.3	5	11.0
MVE 200/3E-20A0	MVE 200/36E-20A0	MVE 440/2E-20A0	B1	20A0	233	9.2	54	2.1	62-74	2.44-2.91	106	4.2	9	0.4	4	130	5.1	154	6.1	15	0.6	65	2.6	125	4.9	120	4.7	112	4.4	7	15.4
MVE 200/3E-23A0	MVE 200/36E-23A0	MVE 440/2E-23A0	G	23A0	222	8.7	55	2.2	62-74 65 115 135	2.44-2.91 2.6 4.5 5.3	106 140 135	4.2 5.5 5.3	9 13 11	0.4 0.5 0.4	4	164	6.5	140	5.5	25	1.0	82	3.2	116	4.6	159	6.3	110	4.3	7	16.0
MVE 300/3E-30A0	MVE 300/36E-30A0	MVE 690/2E-30A0	C1	30A0	254	10.0	42	1.7	80 90 124 135	3.1 3.5 4.9 5.3	110 125 110	4.3 4.9 4.3	11 13 11	0.4 0.5 0.4	4	150	5.9	173	6.8	15	0.6	79	3.1	150	5.9	166	6.5	134	5.3	10	21.6
MVE 400/3E-30A0	MVE 400/36E-30A0	MVE 890/2E-30A0	C1	30A0	274	10.8	52	2.0	80 90 124 135	3.1 3.5 4.9 5.3	110 125 110	4.3 4.9 4.3	11 13 11	0.4 0.5 0.4	4	150	5.9	173	6.8	15	0.6	79	3.1	150	5.9	166	6.5	134	5.3	10	22.7
MVE 500/3E-40A0	MVE 500/36E-40A0	MVE 1200/2E-40A0	D1	40A0	330	13.0	78	3.1	105	4.1	140	5.5	13	0.5	4	170	6.7	196	7.7	20	0.6	92	3.6	169	6.7	166	6.5	158	6.2	16	34.8
MVE 700/3E-40A0	MVE 700/36E-40A0	MVE 1700/2E-40A0	D1	40A0	330	13.0	78	3.1	105	4.1	140	5.5	13	0.5	4	170	6.7	196	7.7	20	0.6	92	3.6	169	6.7	166	6.5	158	6.2	17	36.4
MVE 800/3E-50A0	MVE 800/36E-50A0	MVE 1800/2E-50A0	D1	50A0	321	12.6	62	2.4	120	4.7	170	6.7	17	0.7	4	208	8.2	210	8.3	22	0.9	96	3.8	185	7.3	192	7.6	170	6.7	20	44.8

### DIMENSIONAL SPECIFICATIONS

SINGLE PHASE MODEL			DRAWING	SIZE	C		M		A		B		Ø G		HOLES	D		E		F		H		I		L		N		WEIGHT	
50 Hz	60 Hz	60 Hz U.S. Market			mm	in	mm	in	mm	in	mm	in	mm	in		mm	in	mm	in	mm	in	mm	in	mm	in	mm	in	mm	in	mm	in
MVE 60/3E-10A0-M	MVE 60/36E-10A0-M	MVE 160/2E-10A0-M	A1	10A0	213	8.4	45	1.8	62-74 33	2.44-2.91 1.3	106	4.2	9	0.4	4	130	5.1	135	5.3	11	0.4	50	2.0	96	3.8	107	4.2	85	3.3	4	9.3
MVE 100/3E-10A0-M	MVE 100/36E-10A0-M	MVE 220/2E-10A0-M	A1	10A0	213	8.4	45	1.8	62-74 33	2.44-2.91 1.3	106	4.2	9	0.4	4	130	5.1	135	5.3	11	0.4	50	2.0	96	3.8	107	4.2	85	3.3	5	11.0
MVE 200/3E-20A0-M	MVE 200/36E-20A0-M	MVE 440/2E-20A0-M	B1	20A0	233	9.2	54	2.1	62-74	2.44-2.91	106	4.2	9	0.4	4	130	5.1	154	6.1	15	0.6	65	2.6	125	4.9	120	4.7	112	4.4	7	15.4
MVE 200/3E-23A0-M	MVE 200/36E-23A0-M	MVE 440/2E-23A0-M	G	23A0	222	8.7	55	2.2	62-74 65 115 135	2.44-2.91 2.6 4.5 5.3	106 140 135	4.2 5.5 5.3	9 13 11	0.4 0.5 0.4	4	164	6.5	140	5.5	25	1.0	82	3.2	116	4.6	159	6.3	110	4.3	7	16.0
MVE 300/3E-30A0-M	MVE 300/36E-30A0-M	MVE 690/2E-30A0-M	C1	30A0	254	10.0	42	1.7	80 90 124 135	3.1 3.5 4.9 5.3	110 125 110	4.3 4.9 4.3	11 13 11	0.4 0.5 0.4	4	150	5.9	173	6.8	15	0.6	79	3.1	150	5.9	166	6.5	134	5.3	10	21.6

This information is furnished without warranty, representation, inducement or license of any kind. It is accurate to the best OLI knowledge or is obtained from sources believed to be accurate. OLI therefore assumes no legal responsibility. The latest and most updated information are available online.

# MVE THREE PHASE

MODEL			ELECTRICAL FEATURES																			
			WORKING MOMENT				CENTRIFUGAL FORCE				POWER				CURRENT		Ia/In		Class II Div.2	II 2D	CABLE GLAND	
			Kgcm		inLb		Kg		Lb		kW		Hp		A max (Y)		50Hz	60Hz	Temp. Class	Temp. Class	IEC type	Class temp. °C
50 Hz	60 Hz	60 Hz U.S. Market	50Hz	60Hz	50Hz	60Hz	50Hz	60Hz	50Hz	60Hz	50Hz	60Hz	50Hz	60Hz	400V (Y)	460V (Y)						
MVE 60/3E-10A0	MVE 60/36E-10A0	MVE 160/2E-10A0	1.3	1.0	1.14	0.85	66	71	146	157	0.09	0.09	0.12	0.12	0.25	0.23	3.2	3.2	T4	100	M16	80
MVE 100/3E-10A0	MVE 100/36E-10A0	MVE 220/2E-10A0	2.0	1.3	1.70	1.14	98	95	216	209	0.09	0.09	0.12	0.12	0.25	0.23	3.2	3.2	T4	100	M16	80
MVE 200/3E-20A0	MVE 200/36E-20A0	MVE 440/2E-20A0	3.7	2.6	3.23	2.27	187	189	412	417	0.15	0.18	0.20	0.24	0.35	0.30	3.5	3.5	T4	100	M20	80
MVE 200/3E-23A0	MVE 200/36E-23A0	MVE 440/2E-23A0	3.7	2.6	3.23	2.27	187	189	412	417	0.15	0.18	0.20	0.24	0.35	0.30	3.5	3.5	T4	100	M20	80
MVE 300/3E-30A0	MVE 300/36E-30A0	MVE 690/2E-30A0	6.4	4.5	5.55	3.87	321	323	708	712	0.25	0.28	0.34	0.38	0.52	0.45	3.8	3.7	T4	100	M20	80
MVE 400/3E-30A0	MVE 400/36E-30A0	MVE 890/2E-30A0	8.0	5.7	6.91	4.93	407	411	897	906	0.27	0.33	0.36	0.44	0.58	0.60	3.7	3.7	T4	100	M20	80
MVE 500/3E-40A0	MVE 500/36E-40A0	MVE 1200/2E-40A0	10.3	7.4	8.91	6.41	530	534	1168	1177	0.50	0.58	0.67	0.78	0.96	0.97	4.2	4.4	T4	135	M20	120
MVE 700/3E-40A0	MVE 700/36E-40A0	MVE 1700/2E-40A0	14.9	10.6	12.93	9.18	758	765	1671	1687	0.59	0.61	0.79	0.82	1.25	1.24	4.5	5.2	T4	135	M20	120
MVE 800/3E-50A0	MVE 800/36E-50A0	MVE 1800/2E-50A0	15.7	11.1	13.61	9.60	794	800	1750	1764	0.70	0.84	0.94	1.13	1.45	1.50	4.0	4.0	T4	135	M20	120

# MVE SINGLE PHASE

MODEL			ELECTRICAL FEATURES																				
			WORKING MOMENT				CENTRIFUGAL FORCE				POWER				CURRENT			CAPACITOR			CLASS II DIV.2	II 2D	CABLE GLAND
			kgcm		inlb		kg		lb		kW		hp		A max			µF			Temp. Class	Temp. Class	Class
50 Hz	60 Hz	60 Hz U.S. Market	50Hz	60Hz	50Hz	60Hz	50Hz	60Hz	50Hz	60Hz	50Hz	60Hz	50Hz	60Hz	230V	220V	115V	220V	220V	115V			
MVE 60/3E-10A0-M	MVE 60/36E-10A0-M	MVE 160/2E-10A0-M	1.3	1.0	1.1	0.9	66	71	145	156	0.08	0.09	0.11	0.12	0.43	0.43	1.03	3.0	3.0	6.3	T4	100	M16 80°
MVE 100/3E-10A0-M	MVE 100/36E-10A0-M	MVE 220/2E-10A0-M	2.0	1.3	1.7	1.1	98	95	216	209	0.10	0.11	0.13	0.15	0.54	0.54	1.30	4.0	4.0	8.0	T4	100	M20 80°
MVE 200/3E-20A0-M	MVE 200/36E-20A0-M	MVE 440/2E-20A0-M	3.7	2.6	3.2	2.3	187	189	412	417	0.18	0.21	0.24	0.28	1.14	1.14	2.62	8.0	8.0	16.0	T4	100	M20 80°
MVE 200/3E-23A0-M	MVE 200/36E-23A0-M	MVE 440/2E-23A0-M	3.7	2.6	3.2	2.3	187	189	412	417	0.18	0.21	0.24	0.28	1.14	1.14	2.62	8.0	8.0	16.0	T4	100	M20 80°
MVE 300/3E-30A0-M	MVE 300/36E-30A0-M	MVE 690/2E-30A0-M	6.4	4.5	5.5	3.9	321	323	708	712	0.27	0.28	0.36	0.38	1.58	1.58	3.43	12.5	12.5	25.0	T4	100	

## MVE - 2 POLES ELECTRIC VIBRATORS - THREE PHASE / SINGLE PHASE

APPLICATION	Hopper and silo - feeder - screen
POWDER	Fine - dry granular
PROBLEM SOLVING	Bridge and rat-holing

## FEATURES

DUTY CYCLE	Continuous - S1
FREQUENCY RANGE	From 20Hz to 60Hz [with inverter]
ENVIRONMENT TEMPERATURE	From -20 °C to 40 °C (from -4 °F to 104 °F)
MAX NOISE LEVEL	76 dB(a)
ATEX	II 3D Ex tc IIIC Tx IP66
MATERIAL	Aluminium body; aluminium (powder painted) cover

## ACCESSORIES

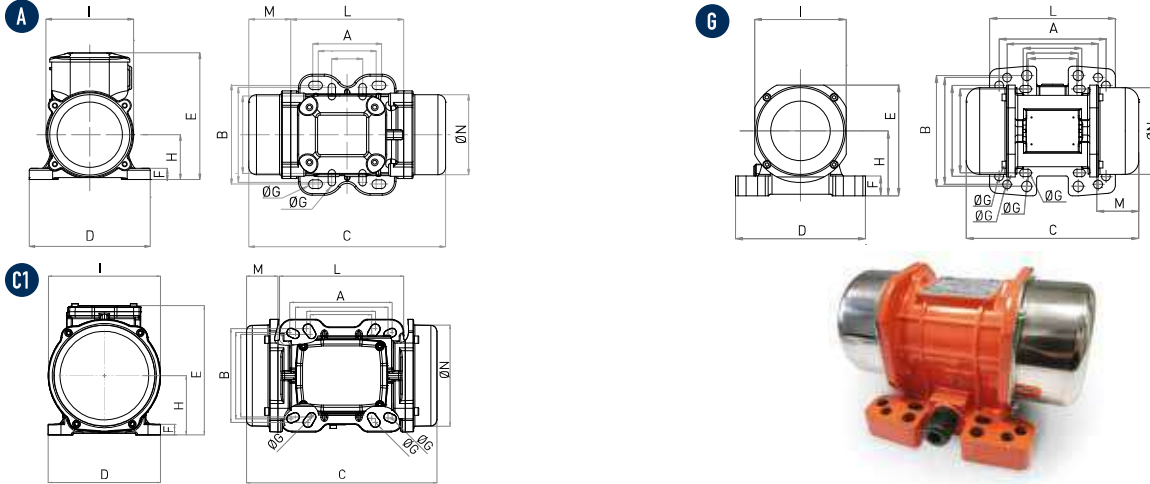
CAPACITOR	Available
-----------	-----------

## OPTIONS

ATEX	Ex II 2D Ex t IIIC Tx Db IP66 Ex tb IIIC Tx Db IP66
CUSTOMISED CABLE	Available

This information is furnished without warranty, representation, inducement or license of any kind. It is accurate to the best OLI knowledge or is obtained from sources believed to be accurate. OLI therefore assumes no legal responsibility. The latest and most updated information are available online.





## DIMENSIONAL SPECIFICATIONS

MODEL	DRAWING	SIZE	C		M		A		B		Ø G		HOLES N°	D		E		F		H		I		L		N			
			mm	in	mm	in	mm	in	mm	in	mm	in		mm	in	mm	in	mm	in	mm	in	mm	in	mm	in	mm	in	mm	in
			50Hz	50Hz	50Hz	50Hz	mm	in	mm	in	mm	in		mm	in	mm	in	mm	in	mm	in	mm	in	mm	in	mm	in	mm	in
MVE 50/3N-10A0-12V	A	10A0	211	8.3	45	1.8	62-74	2.4-2.9	106	4.2	9	0.4	4	130	5.1	136	5.4	12	0.5	48	1.9	94	3.7	121	4.8	85	3.4		
MVE 50/3N-10A0-24V	A	10A0	211	8.3	45	1.8	33	1.3	83-102	3.3-4.0	7	0.3	4	130	5.1	136	5.4	12	0.5	48	1.9	94	3.7	121	4.8	85	3.4		
MVE 120/3N-23A0-12V	G	23A0	218	8.6	53	2.1	62-74	2.4-2.9	106	4.2	9	0.4	4	164	6.5	140	5.5	25	1.0	82	3.2	116	4.6	159	6.3	110	4.3		
MVE 120/3N-23A0-24V	G	23A0	218	8.6	53	2.1	65	2.6	140	5.5	13	0.5	4	164	6.5	140	5.5	25	1.0	82	3.2	116	4.6	159	6.3	110	4.3		
MVE 200/3N-23A0-12V	G	23A0	218	8.6	53	2.1	115	4.5	135	5.3	11	0.4	4	164	6.5	140	5.5	25	1.0	82	3.2	116	4.6	159	6.3	110	4.3		
MVE 200/3N-23A0-24V	G	23A0	218	8.6	53	2.1	135	5.3	115	4.5	11	0.4	4	164	6.5	140	5.5	25	1.0	82	3.2	116	4.6	159	6.3	110	4.3		
MVE 500/3N-40A0-24V	C1	40A0	330	13.0	78	3.1	105	4.1	140	5.5	13	0.5	4	170	6.6	196	7.7	15	0.6	92	3.6	174	6.8	166	6.9	160	6.3		
MVE 1500/3N-50A0-24V	C1	50A0	321	12.8	62	2.5	120	4.7	170	6.7	18	0.7	4	208	8.2	210	8.3	18	0.7	96	3.8	184	7.2	198	7.8	169	6.7		

## ELECTRICAL SPECIFICATIONS

MODEL	RPM	WORKING MOMENT		CENTRIFUGAL FORCE		WEIGHT		POWER		MAX CURRENT A	EX II 3D Temp. Class [°C]	CABLE TYPE Class Temp	CABLE GLAND Class Temp
		kgcm	inlb	kg	lb	kg	lb	kW	Hp				
MVE 50/3N-10A0-12V	3000	1.02	0.89	50	110	4.4	9.7	0.08	0.11	3.3	100	2Gx1.5 90°C	M16 80 °C
MVE 50/3N-10A0-24V	3000	1.02	0.89	50	110	4.4	9.7	0.08	0.11	6.6	100	2Gx1.5 90°C	M16 80 °C
MVE 120/3N-23A0-12V	3000	1.10	1.86	117	258	7.2	15.9	0.12	0.15	4.8	100	2Gx1.5 90°C	M20 80 °C
MVE 120/3N-23A0-24V	3000	1.10	1.86	117	258	7.2	15.9	0.12	0.15	9.6	100	2Gx1.5 90°C	M20 80 °C
MVE 200/3N-23A0-12V	3000	4.17	3.62	200	441	7.2	15.9	0.16	0.21	6.7	100	2Gx1.5 90°C	M20 80 °C
MVE 200/3N-23A0-24V	3000	4.17	3.62	200	441	7.2	15.9	0.16	0.21	13.3	100	2Gx1.5 90°C	M20 80 °C
MVE 500/3N-40A0-24V	3000	10.40	9.03	530	1168	15.8	31.7	0.26	0.35	11.0	100	2Gx1.5 90°C	M20 80 °C
MVE 1500/3N-50A0-24V	3000	22.40	19.44	1616	3563	21.6	48.1	0.52	0.70	21.5	100	2Gx1.5 90°C	M20 80 °C

## MVE-DC - DIRECT CURRENT ELECTRIC VIBRATORS

**APPLICATION** Dump truck - concrete pump - automotive hopper - salt spreader - dump trailer

**POWDER** Granular - Concrete

**PROBLEM SOLVING** Bridge and rat-holing

## FEATURES

**DUTY CYCLE** Continuous - S1

**ENVIRONMENT TEMPERATURE** From -20 °C to 40 °C (from -4 °F to 104 °F)

**MAX NOISE LEVEL** 76 dB(a)

**ATEX** II 3D Ex tc IIIC Tx IP 66

**MATERIAL** Body aluminium - stainless steel /aluminium (powder painted) cover

## OPTIONS

**CUSTOMISED CABLE** Available