

## Doppelflanschklappe in F16-Baulänge/ Double flange butterfly valve PA-1160

### Technische Daten

#### Bauform

Ab DN 100 erhältlich  
 Baulänge nach EN 558-1/13 (F16)

Mit Handrad

Topflansch nach ISO 5211

Ab DN 250 mit Schneckenradgetriebe

Gehäuse: GGG-50 EKB

Scheibe: Edelstahl 1.4408

Dichtung: EPDM

### Specification

#### Design

Available from DN 100  
 Face to face according to EN 558-1/13 (F16)

With handwheel

Topflange according to ISO 5211

From DN 250 with worm gear

Body: GGG-50 EKB

Disc: stainless steel 1.4408

Seat: EPDM



### Anschluss

Passend zwischen Flansche PN 10/16

### Connection

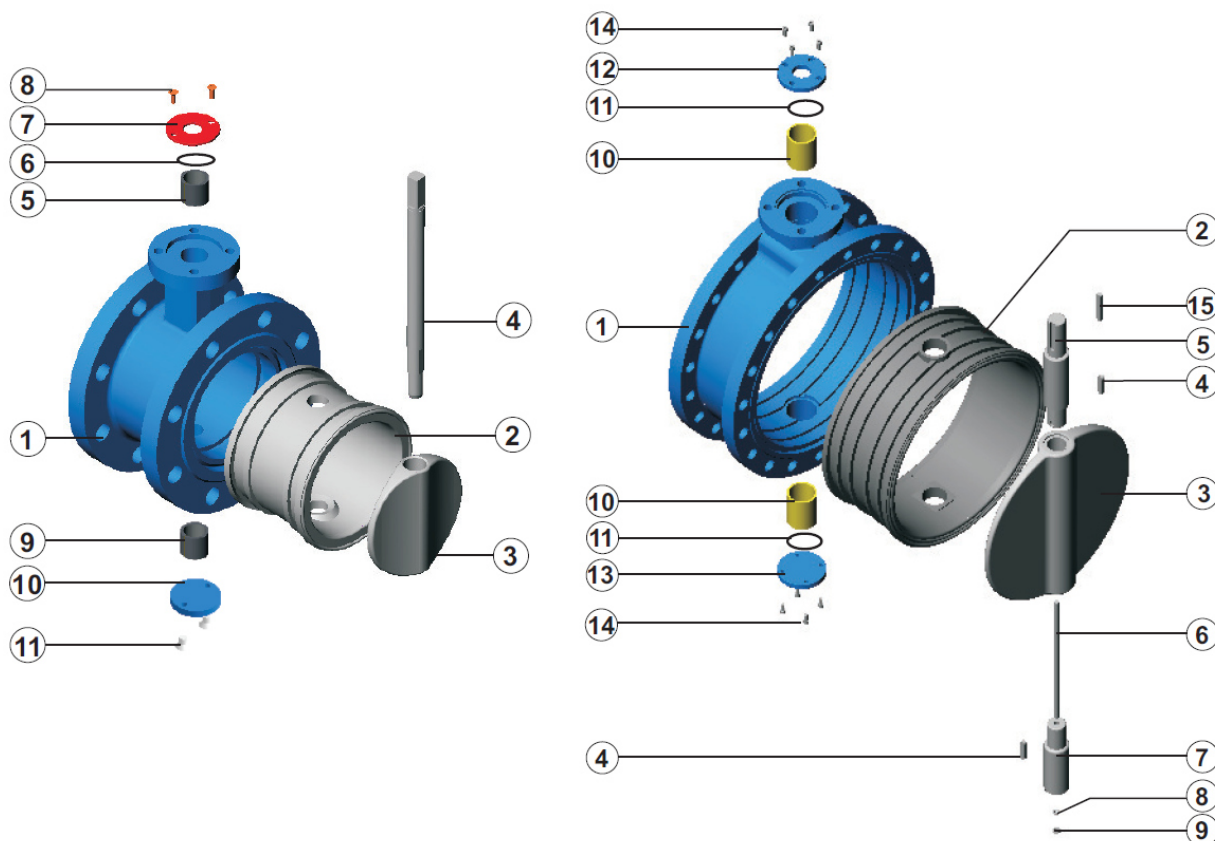
Suitable between flanges PN 10/16

### Betriebstemperatur

Max. 120°C

### Temperature Range

Max. 120°C



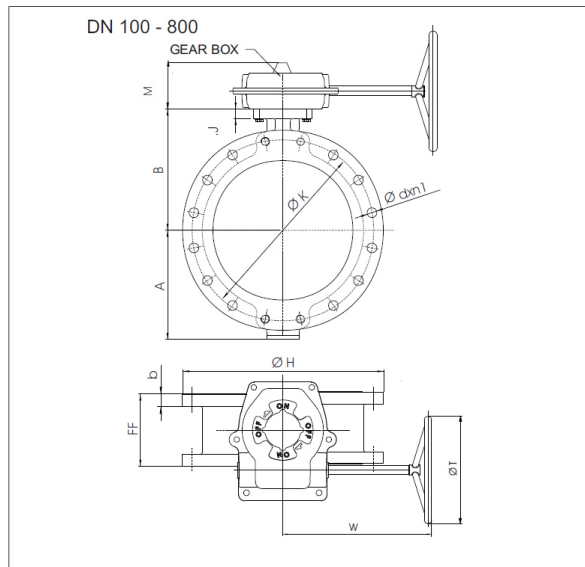
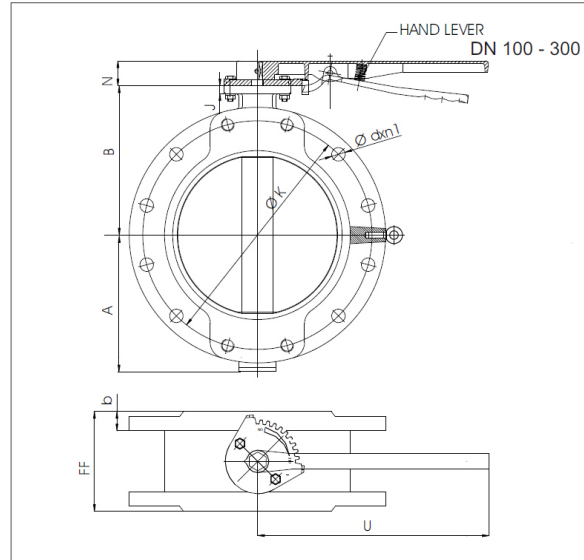
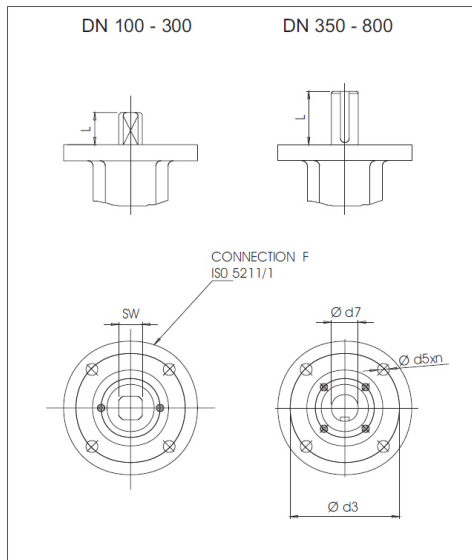
## PN 10 - PN 16

### Parts List & Material Specification

Ø100-300 Ø350-800

P.NO	PART NAME	MATERIAL
1	Body	GGG 40-50, GGG 40.3, Al-Bz, AISI 316, GS-C25
2	Body seat	EPDM, NBR, Viton, Hypalon, Neopren, Nr, Silicone
3	Disc	AISI 316, Al-Bz, GGG 40-50, GS-C25, UB 6
4	Stem	AISI 304, AISI 316, AISI 420
5	Bearing	SB (Carbon Steel)
6	O-Ring	NBR
7	Washer	St-37, A-2
8	Bolt	8.8, A-2
9	Bearing	SB (Carbon Steel + PTFE)
10	Lower Cover	St-37
11	Bolt	8.8, A-2

P.NO	PART NAME	MATERIAL
1	Body	GGG 40-50, GGG 40.3, Al-Bz, AISI 316, GS-C25
2	Body seat	EPDM, NBR, Viton, Hypalon, Neopren, NR, Silicone
3	Disc	AISI 316, Al-Bz, GGG 40-50, GS-C25, UB 6
4	Key	C 45 k
5	Upper stem	AISI 304, AISI 316, AISI 420
6	Connecting stud	AISI 304, AISI 316, AISI 420
7	Lower stem	AISI 304, AISI 316, AISI 420
8	Washer	St-37, A-2
9	Nut	6.8, A-2
10	Bearing	SB (Carbon Steel + PTFE)
11	O-ring	EPDM, NBR
12	Upper cover	C 45
13	Lower cover	C 45
14	Bolt	8.8, A-2
15	Key	C 45 k

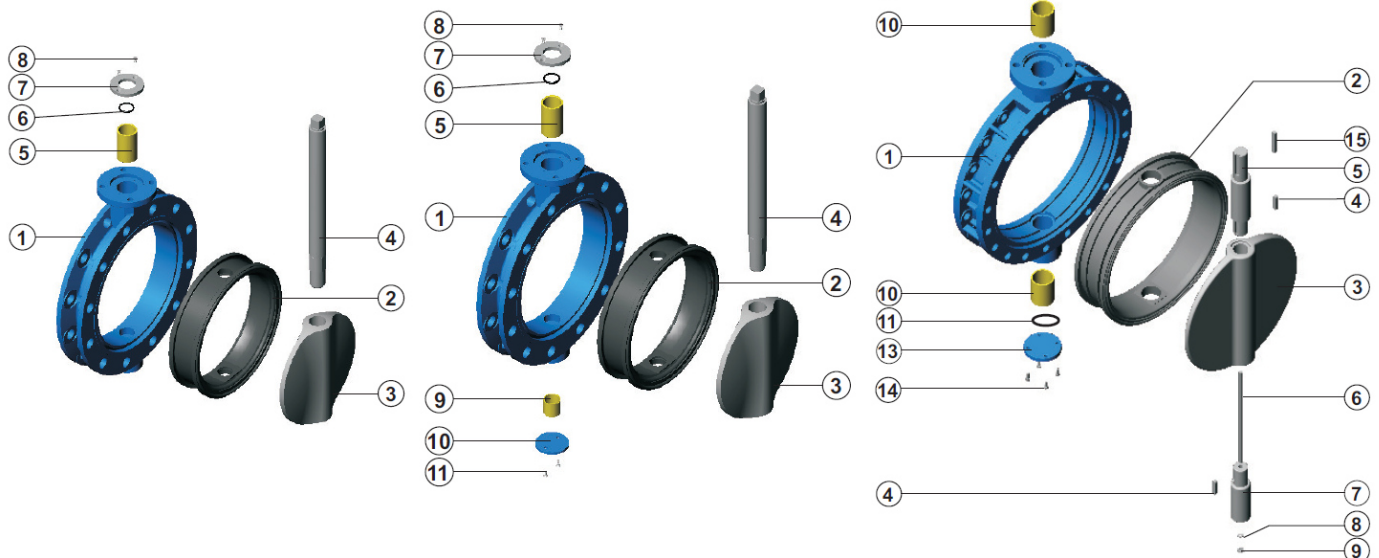


DN	A	B	b	FF	Ø H	J	M	N	U	W	Ø T	F	Ø d5xn	□ SW Ø d7	L	Ø d3	PN 10			PN 16			CL 150		
																	Ø K	Ø d	n1	Ø K	Ø d	n1	Ø K	Ø d	n1
Ø 100	112	155	23.9	127	220	14	50	37	260	159	200	07	9x4	□ 14	32	70	180	Ø 18	8	180	Ø 18	8	190.5	19.1	8
Ø 125	125	160	23.9	140	250	14	50	37	260	159	200	07	9x4	□ 14	32	70	210	Ø 18	8	210	Ø 18	8	215.9	22.4	8
Ø 150	146	189	25.4	140	285	14	50	37	350	159	200	07	9x4	□ 17	32	70	240	Ø 22	8	240	Ø 22	8	241.3	22.4	8
Ø 200	170	213	28.4	152	340	15	75	37	350	238	260	10	11x4	□ 17	32	102	295	Ø 22	8	295	Ø 22	12	298.5	22.4	8
Ø 250	220	250	30.2	165	405	15	75	47	400	238	260	10	11x4	□ 22	32	102	350	Ø 22	12	355	Ø 26	12	362	25.4	12
Ø 300	247	290	31.8	178	460	15	75	47	400	238	260	10	11x4	□ 27	32	102	400	Ø 22	12	410	Ø 26	12	431.8	25.4	12
Ø 350	300	318	35	190	520	28	102	-	-	315	400	14	17.5x4	Ø 36	75	140	460	Ø 22	16	470	Ø 26	16	476.3	28.4	12
Ø 400	326	367	36.8	216	580	28	102	-	-	315	400	14	17.5x4	Ø 45	75	140	515	Ø 26	16	525	Ø 30	16	539.8	28.4	16
Ø 450	364	410	39.8	222	640	28	102	-	-	315	400	16	22x4	Ø 45	92	165	565	Ø 26	20	585	Ø 30	20	577.9	31.8	16
Ø 500	410	447	42.9	229	715	28	102	-	-	315	400	16	22x4	Ø 50	92	165	620	Ø 26	20	650	Ø 33	20	635	31.8	20
Ø 600	482	525	47.8	267	840	28	102	-	-	414	600	16	22x4	Ø 65	92	165	725	Ø 30	20	770	Ø 36	20	749.3	35.1	20
Ø 700	564	548	53	229 / 292	910	30	135	-	-	414	600	25	18x8	Ø 68	118	254	840	Ø 30	24	840	Ø 36	24	863.6	35.1	28
Ø 800	605	640	58	318	1025	30	135	-	-	414	600	25	18x8	Ø 82	118	254	950	Ø 34	24	950	Ø 41	24	977.9	Ø 41	28

FREE SAHFT Weight (kg)	HAND LEVER		GEAR BOX			
	Type	Weight (kg)	PN 10		PN 16	
			Type	Weight (kg)	Type	Weight (kg)
13.5	92-200	0.800	AST-20	2,900	AST-20	2,900
14.0	92-200		AST-20			
17.0	92-300		AST-20			
35.0	92.400	2.600	AST-30	8,220	AST-30	8,220
53.0	92.400		AST-30			
94.0	92.400		AST-30			
140.0	-	-	AST-40	12,240	AST-40	12,240
165.0	-	-	AST-40		AST-60	17,900
187.0	-	-	AST-60	17,900	AST-80	32,660
255.0	-	-	AST-60		AST-80	
376.0	-	-	AST-80	32,660	AB1950NHR	45,000
-	-	-	AB1950NHR	45,000	AB6800NLT/SP4	70,000
-	-	-	AB6800NLT/SP4	70,000	AB6800NLT/SP4	70,000

## Doppelflanschklappe in K1-Kurzbaulänge/ Double flange butterfly valve PA-1170

Technische Daten	Specification
<b>Bauform</b>	<b>Design</b>
Ab DN 250 erhältlich	Available from DN 250
Baulänge nach EN 558-1 (K1)	Face to face according to EN 558-1 (K1)
Mit Handrad	With handwheel
Topflansch nach ISO 5211	Topflange according to ISO 5211
Mit Schneckenradgetriebe	With worm gear
Gehäuse: GGG-50 EKB	Body: GGG-50 EKB
Scheibe: Edelstahl 1.4408	Disc: stainless steel 1.4408
Dichtung: EPDM	Seat: EPDM
<b>Anschluss</b>	<b>Connection</b>
Passend für Flansche PN 10 (PN 16 auf Anfrage)	Suitable for flanges PN 10 (PN 16 on request)
<b>Betriebstemperatur</b>	<b>Temperature Range</b>
Max. 120°C	Max. 120°C





## Parts List & Material Specification

Ø100-200

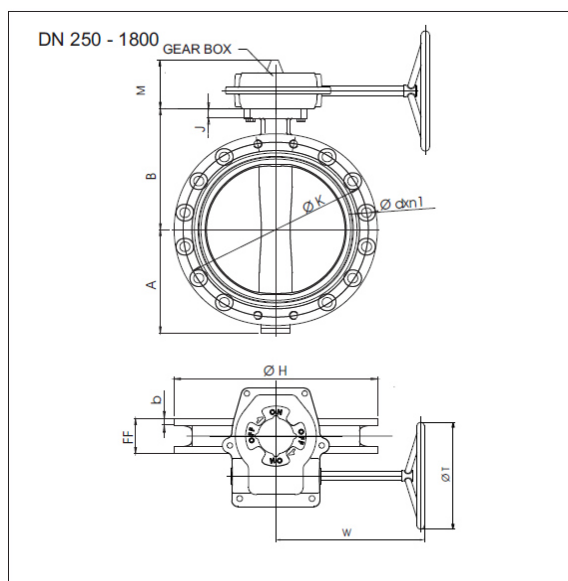
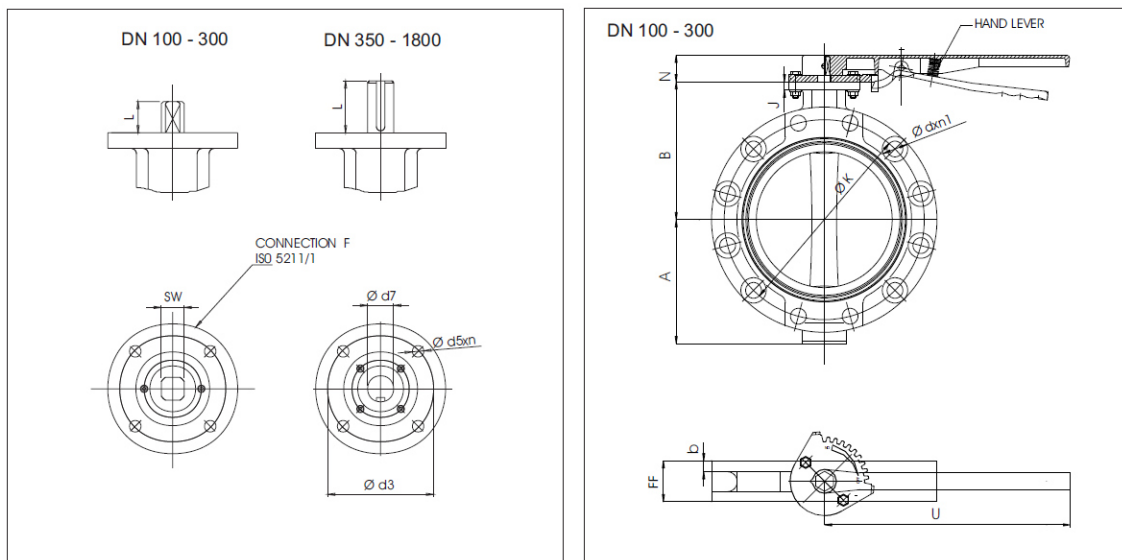
Ø250-300

Ø350-1800

P.NO	PART NAME	MATERIAL
1	Body	GGG 40-50, GGG 40.3, AI-Bz AISI 316, GS-C25
2	Body seat	EPDM, NBR, Viton, Hypalon Neopren, NR, Silicone
3	Disc	AISI 316, AI-Bz, GGG 40-50, GS-C25, UB 6
4	Stem	AISI 304, AISI 316, AISI 420
5	Bearing	SB (Carbon Steel + PTFE)
6	O-Ring	NBR
7	Washer	St-37, A-2
8	Bolt	8.8, A-2

P.NO	PART NAME	MATERIAL
1	Body	GGG 40-50, GGG 40.3, AI-Bz AISI 316, GS-C25
2	Body seat	EPDM, NBR, Viton, Hypalon Neopren, NR, Silicone
3	Disc	AISI 316, AI-Bz, GGG 40-50, GS-C25, UB 6
4	Stem	AISI 304, AISI 316, AISI 420
5	Bearing	SB (Carbon Steel + PTFE)
6	O-Ring	NBR
7	Washer	St-37, A-2
8	Bolt	8.8, A-2
9	Bearing	SB (Carbon Steel + PTFE)
10	Lower Cover	St-37
11	Bolt	8.8, A-2

P.NO	PART NAME	MATERIAL
1	Body	GGG 40-50, GGG 40.3, AI-Bz AISI 316, GS-C25
2	Body seat	EPDM, NBR, Viton, Hypalon, Neopren, NR, Silicone
3	Disc	AISI 316, AI-Bz, GGG 40-50, GS-C25, UB 6
4	Key	C 45 k
5	Upper stem	AISI 304, AISI 316, AISI 420
6	Connecting stud	AISI 304, AISI 316, AISI 420
7	Lower stem	AISI 304, AISI 316, AISI 420
8	Washer	St-37, A-2
9	Nut	6.8, A-2
10	Bearing	SB (Carbon Steel + PTFE)
11	O-ring	EPDM, NBR
12	Upper cover	C 45
13	Lower cover	C 45
14	Bolt	8.8, A-2
15	Key	C 45 k



DN	A	B	b	FF	Ø H	J	M	N	U	W	Ø T	F	Ø d5xn	□ SW Ø d7	L	Ø d3	PN 10			PN 16		
																	Ø K	Ø d	n1	Ø K	Ø d	n1
Ø 100	110	155	-	52	220	14	50	37	260	159	200	07	9x4	□ 14	20	70	180	Ø 19	8	180	Ø 19	8
Ø 125	123	158	-	56	250	14	50	37	260	159	200	07	9x4	□ 14	20	70	210	Ø 19	8	210	Ø 19	8
Ø 150	141	185	-	56	285	14	50	37	350	159	200	07	9x4	□ 17	22	70	240	Ø 23	8	210	Ø 23	8
Ø 200	174	213	-	60	340	15	50	37	350	159	200	07	9x4	□ 17	22	70	295	Ø 23	8	295	Ø 23	12
Ø 250	212	245	22	68	400	15	75	47	400	238	260	10	11x4	□ 22	32	102	350	Ø 23	12	355	Ø 28	12
Ø 300	243	282	24.5	78	455	15	75	47	400	238	260	10	11x4	□ 27	32	102	400	Ø 23	12	410	Ø 28	12
Ø 350	300	318	26.5	78 / 92	515	28	102	-	-	315	400	14	17.5x4	Ø 36	75	140	460	Ø 23	16	470	Ø 28	16
Ø 400	326	362	28	102	575	28	102	-	-	315	400	14	17.5x4	Ø 36	75	140	515	Ø 28	16	525	Ø 31	16
Ø 450	365	410	30	114	635	26	102	-	-	315	400	16	22x4	Ø 45	92	165	565	Ø 28	20	585	Ø 31	20
Ø 500	408	435	31.5	127	710	26	102	-	-	315	400	16	22x4	Ø 45	92	165	620	Ø 28	20	650	Ø 34	20
Ø 600	482	519	36	154	835	26	102	-	-	315	600	16	22x4	Ø 60	92	165	725	Ø 31	20	770	Ø 37	20
Ø 700	564	548	39.5	165	905	32	135	-	-	414	600	25	18x8	Ø 68	118	254	840	Ø 31	24	840	Ø 37	24
Ø 800	587	587	43	180 / 190	1020	35	135	-	-	414	600	25	18x8	Ø 80	118	254	950	Ø 34	24	950	Ø 41	24
Ø 900	655	661	46.5	190 / 203	1115	35	225	-	-	525	600	30	22x8	Ø 80	200	298	1050	Ø 34	28	1050	Ø 41	28
Ø 1000	718	751	50	216	1255	35	225	-	-	525	600	30	22x8	Ø 100	200	298	1160	Ø 37	28	1170	Ø 44	28
Ø 1200	985	1005	57	254	1455	40	225	-	-	525	600	30	22x8	Ø 100	200	298	1380	Ø 41	32	1390	Ø 50	32
Ø 1400	1017	1030	60	279	1685	60	225	-	-	525	600	40	38x8	Ø 155	200	406	1590	Ø 44	36	1590	Ø 50	36
Ø 1600	1145	1160	65	318	1930	60	225	-	-	525	600	48	38x12	Ø 160	200	483	1820	Ø 50	40	1820	Ø 57	40
Ø 1800	1172	1260	70	356	2130	60	225	-	-	525	600	48	38x12	Ø 150	200	483	2020	Ø 50	44	2020	Ø 57	44

FREE SHAFT Weight (kg)	HAND LEVER		GEAR BOX			
	Type	Weight (kg)	PN 10		PN 16	
			Type	Weight (kg)	Type	Weight (kg)
12.0	92-200	0.800	AST-20	2,900	AST-20	2,900
14.0	92-200		AST-20			
17.0	92-300		AST-20			
25.0	92-300	0.900	AST-20	8,220	AST-20	
40.0	92-400		AST-30			
46.0	92-400		AST-30			
55.0	-	-	AST-40	12,240	AST-40	12,240
81.0	-	-	AST-40		AST-60	17,900
140.0	-	-	AST-60		AST-80	32,660
150.0	-	-	AST-60	AST-80		
201.0	-	-	AST-80	32,660	AB1950NHR	45,000
292.0	-	-	AB1950NHR	45,000	AB6800NLT/SP4	70,000
365.0	-	-	AB6800NLT/SP4	70,000	AB6800NLT/SP4	
506.0	-	-	AB6800N/SP4	70,000	AB6800N/SP6	81,000
700.0	-	-	AB6800N/SP6	81,000	A250N/SP9	225,000
1.400.0	-	-	A250N/SP9	225,000	IW9RA	262,000
-	-	-	IW82	222,000	IW9RA	262,000
-	-	-	IW11	570,000	IW11	570,000
-	-	-	IW11	570,000	IW11	570,000

## Doppelt-exzentrische Doppelflanschabsperklappe/ Double-eccentric double flange butterfly valve PA-2010

### Technische Daten

#### Bauform

DN 150 - 3000

Baulänge nach EN 558-1/14 (F4)

Mit Handrad

Topflansch nach ISO 5211

Mit Schneckenradgetriebe

Gehäuse: GGG-50 EKB

Scheibe: GGG-50 EKB

Dichtung: EPDM

### Specification

#### Design

DN 150 - 3000

Face to face according to EN 558-1/14 (F4)

With handwheel

Topflange according to ISO 5211

With worm gear

Body: GGG-50 EKB

Disc: GGG-50 EKB

Seat: EPDM

### Anschluss

Passend für Flansche PN 10 oder 16

### Connection

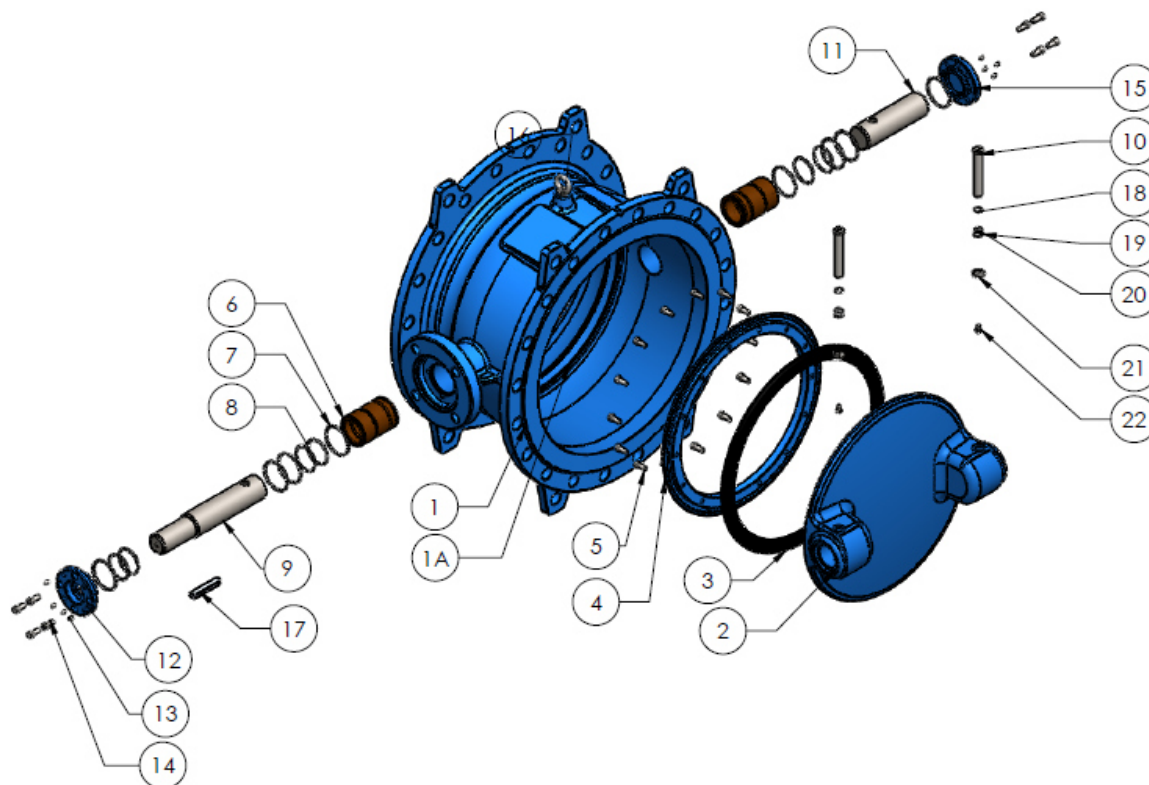
Suitable for flanges PN 10 or 16

### Betriebstemperatur

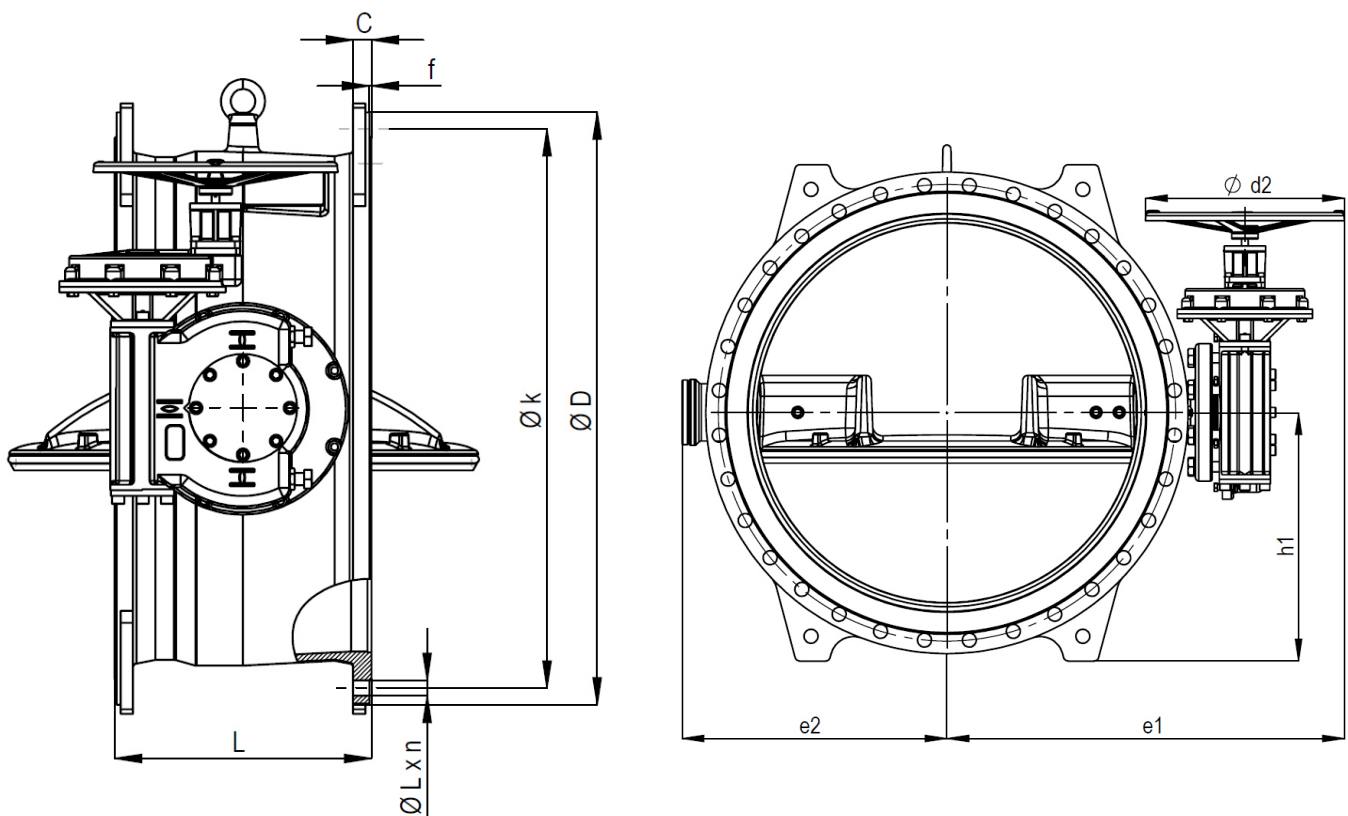
Max. 120°C

### Temperature Range

Max. 120°C



Ø 150 - 3000		
No.	Part name	Material
1	Body	GGG 40 - 50
1A	Body seat	Stainless steel with welding
2	Disc	GGG 40 - 50
3	Disc seat	EPDM
4	Retaining ring	St 37, AISI 304, AISI 316
5	Bolt	A2
6	Front - back bushing	Bronze
7	O-Ring	EPDM
8	O-Ring	EPDM
9	Front shaft	1.4021, 1.4057
10	Pin	1.4021, 1.4057
11	Back shaft	1.4021, 1.4057
12	Front cover	St 37, GGG 40
13	Setscrew	8.8
14	Bolt	8.8
15	Back cover	St 37, GGG 40
16	Eye bolt	A 105
17	Key	C 45 K
18	O-Ring	EPDM
19	Segment	A2
20	O-Ring	EPDM
21	Washer	A2
22	Bolt	A2





PN 10											
DN	PN	Ø D	L S14	e1	e2	d2	h1	f	C	Ø k x n x Ø L	Weight
mm	bar	mm	mm	mm	mm	mm	mm	mm	mm	mm - n x mm	kg
150	10	285	210	345	142	260	160	3	19	Ø 240 x 8 x Ø 23	37,0
200	10	340	230	388	175	260	190	3	20	Ø 295 x 8 x Ø 23	60,0
250	10	395	250	406	201	260	220	3	22	Ø 350 x 12 x Ø 23	74,5
300	10	445	270	448	235	260	250	4	24,5	Ø 400 x 12 x Ø 23	90,0
350	10	505	290	567	260	400	280	4	24,5	Ø 460 x 16 x Ø 23	155,0
400	10	565	310	600	302	400	310	4	24,5	Ø 515 x 16 x Ø 28	165,0
450	10	615	330	610	330	400	330	4	25,5	Ø 565 x 20 x Ø 28	261,0
500	10	670	350	665	372	400	360	4	26,5	Ø 620 x 20 x Ø 28	237,0
600	10	780	390	735	425	400	440	5	30	Ø 725 x 20 x Ø 31	345,0
700	10	895	430	872	458	600	465	5	32,5	Ø 840 x 24 x Ø 31	546,0
800	10	1015	470	954	520	600	540	5	35	Ø 950 x 24 x Ø 34	690,0
900	10	1115	510	1004	600	600	570	5	37,5	Ø 1050 x 28 x Ø 34	1040,0
1000	10	1230	550	1024	625	600	676	5	40	Ø 1160 x 28 x Ø 37	1522,0
1100	10	1340	550	1157	765	600	680	5	42,5	Ø 1270 x 32 x Ø 37	1794,0
1200	10	1455	630	1250	800	600	735	5	45	Ø 1380 x 32 x Ø 41	2171,0
1300	10	1585	630	1332	881	600	810	5	59	Ø 1490 x 32 x Ø 42	2550,0
1400	10	1675	710	1362	910	600	878	5	46	Ø 1590 x 36 x Ø 44	3222,0
1500	10	1785	710	1364	937	600	900	5	47	Ø 1700 x 36 x 44	3450,0
1600	10	1915	790	1510	1075	600	976	5	49	Ø 1820 x 40 x Ø 50	3740,0
1700	10	2020	790	1510	1075	600	1030	5	52	Ø 1920 x 40 x Ø 50	4275,0
1800	10	2115	870	1370	1260	600	1058	5	52	Ø 2020 x 44 x Ø 50	4821,0
2000	10	2325	950	1780	1385	600	1200	5	55	Ø 2230 x 48 x Ø 50	7500,0
2200	10	2555	950	1920	1560	600	1310	6	58	Ø 2440 x 52 x Ø 57	9925,0
2400	10	2760	950	1920	1481	-	1379	6	65	Ø 2650 x 56 x Ø 56	13300,0
2500	10	2860	950	2018	1575	-	1444	6	65	Ø 2750 x 56 x Ø 56	14000,0
2600	10	2960	950	2150	1630	-	1550	6	70	Ø 2850 x 60 x Ø 56	16000,0
2800	10	3180	950	2250	1808	-	1600	6	70	Ø 3070 x 64 x Ø 56	20000,0
3000	10	3405	950	-	1855	-	1810	8	75	Ø 3290 x 68 x Ø 62	25000,0

PN 16											
DN	PN	Ø D	L S14	e1	e2	d2	h1	f	C	Ø k x n x Ø L	Weight
mm	bar	mm	mm	mm	mm	mm	mm	mm	mm	mm - n x mm	kg
150	16	285	210	345	142	260	160	3	19	Ø 240 x 8 x Ø 23	37,0
200	16	340	230	388	175	260	190	3	20	Ø 295 x 12 x Ø 23	60,0
250	16	405	250	406	201	260	220	3	22	Ø 355 x 12 x Ø 28	74,5
300	16	460	270	448	235	260	250	4	24,5	Ø 410 x 12 x Ø 28	90,0
350	16	520	290	567	260	400	280	4	26,5	Ø 470 x 16 x Ø 28	155,0
400	16	580	310	600	302	400	310	4	28	Ø 525 x 16 x Ø 31	184,0
450	16	640	330	610	330	400	330	4	30	Ø 585 x 20 x Ø 31	296,0
500	16	715	350	665	372	400	360	4	31,5	Ø 650 x 20 x Ø 34	280,0
600	16	840	390	735	425	400	440	5	36	Ø 770 x 20 x Ø 37	383,0
700	16	910	430	872	458	600	465	5	39,5	Ø 840 x 24 x Ø 37	560,0
800	16	1025	470	954	520	600	540	5	43	Ø 950 x 24 x Ø 41	700,0
900	16	1125	510	1004	600	600	570	5	46,5	Ø 1050 x 28 x Ø 41	1056,0
1000	16	1255	550	1024	625	600	676	5	50	Ø 1170 x 28 x Ø 44	1550,0
1100	16	1355	550	1157	765	600	680	5	53,5	1270 x 32 x Ø 44	1920,0
1200	16	1485	630	1250	800	600	735	5	57	Ø 1390 x 32 x Ø 50	2255,0
1300	16	1585	630	1332	881	600	810	5	59	Ø 1490 x 32 x Ø 50	2550,0
1400	16	1685	710	1362	910	600	878	5	60	Ø 1590 x 36 x Ø 50	3290,0
1500	16	1820	710	1485	1060	600	940	5	62,5	Ø 1710 x 36 x Ø 57	3530,0
1600	16	1930	790	1510	1075	600	976	5	65	Ø 1820 x 40 x Ø 57	4360,0
1700	16	-	790	-	-	600	-	5	-	-	-
1800	16	2130	870	1370	1260	600	1058	5	70	Ø 2020 x 44 x Ø 57	4942,5
2000	16	2345	950	1835	1414	600	1200	5	75	Ø 2230 x 48 x Ø 62	7850,0
2200	16	2555	950	1920	1560	600	1310	5	80	Ø 2440 x 52 x Ø 62	12000,0
2400	16	2770	950	2750	1875	-	1400	6	80	Ø 2660 x 56 x Ø 62	15500,0
2500	16	2880	950	2780	1575	-	1460	6	85	Ø 2760 x 56 x Ø 62	18000,0
2600	16	3000	950	2845	1630	-	1536	6	90	Ø 2890 x 56 x Ø 70	19500,0
2800	16	3240	950	2870	1848	-	1580	6	95	Ø 3130 x 64 x Ø 70	23500,0
3000	16	-	950	-	1855	-	-	8	-	-	29000,0